

K.I.DIAGRAM

Connection with the first layer membrane and the fourth layer membrane by IKOSOLID

Part 2

Unification of the gravity and the electromagnetic willpower by the graviton "Repulsive Force Element and Gravitation Element"

- **The occurrence of the repulsive force teleportation — Part 1**
- **The birth of the new electricity and the electric wave of repulsive force
element $e +$ and gravitation element $e -$ — Part 2**

October, 2012

Koei Endo

Ikuyo Endo

Masayo Endo

Copyright © 2012 Koei Endo , Ikuyo Endo & Masayo Endo All Rights Reserved

Purpose of this paper

The purpose of this paper is to show result of the connection of the first layer membrane of multi-layer, the multidimensional space by IKOSOLID and the fourth layer membrane. With the result, we show that a level of the practical use already includes this study.

Practical use result : practical use of **the repulsive force** and **new electricity, electric wave**. A principle of the practical use is shown by an experiment and a theory in this paper.

About the multidimensional physics, the connection between Elementary Particles and ELASTIC MEMBRANES in the paper of Dr. Alexander Egoyan has a big influence on this paper. His next words that are in conclusion of his latest paper “THE CONCEPTUAL BASIS FOR MULTIDIMENSIONAL PHYSICS” are in particular a big opportunity of this paper. *In this physics all objects - elementary particles and elastic membranes may have different number of dimensions.*

Table of contents

Part 2

Preface and abstract 3

The text

Part 1	
A, Velocity of light of super velocity of light e+	
	” The speed same as the first layer membrane”
Change in quality of the gravitational place:	<u>Outbreak of the repulsive force</u>
Electromagnetic change in quality:	<u>The use of repulsive force, the repulsive force teleportation</u> 5
A - 1 Velocity of light of super velocity of light e+ 6
A - 2 Basic principle 7
A - 3 Proof experiment 12

Part 2

B, Low velocity of light of super velocity of light e+

”Equal speed for low velocity of light e-”

Change in quality of the gravitational place: Outbreak of the repulsive force

Electromagnetic change in quality: Birth of new electricity and electric wave

. 5

B - 1 Low velocity of light of super velocity of light e+

”Equal speed for low velocity of light e- 6

B - 2 The basic principle 8

B - 3 The demonstration experiment 14

B - 4 Characteristic of the new electricity and the electric wave 26

B - 5 The impedance measurement about IKOSOLID 27

C Conclusion ” Formation of the integration of Gravity

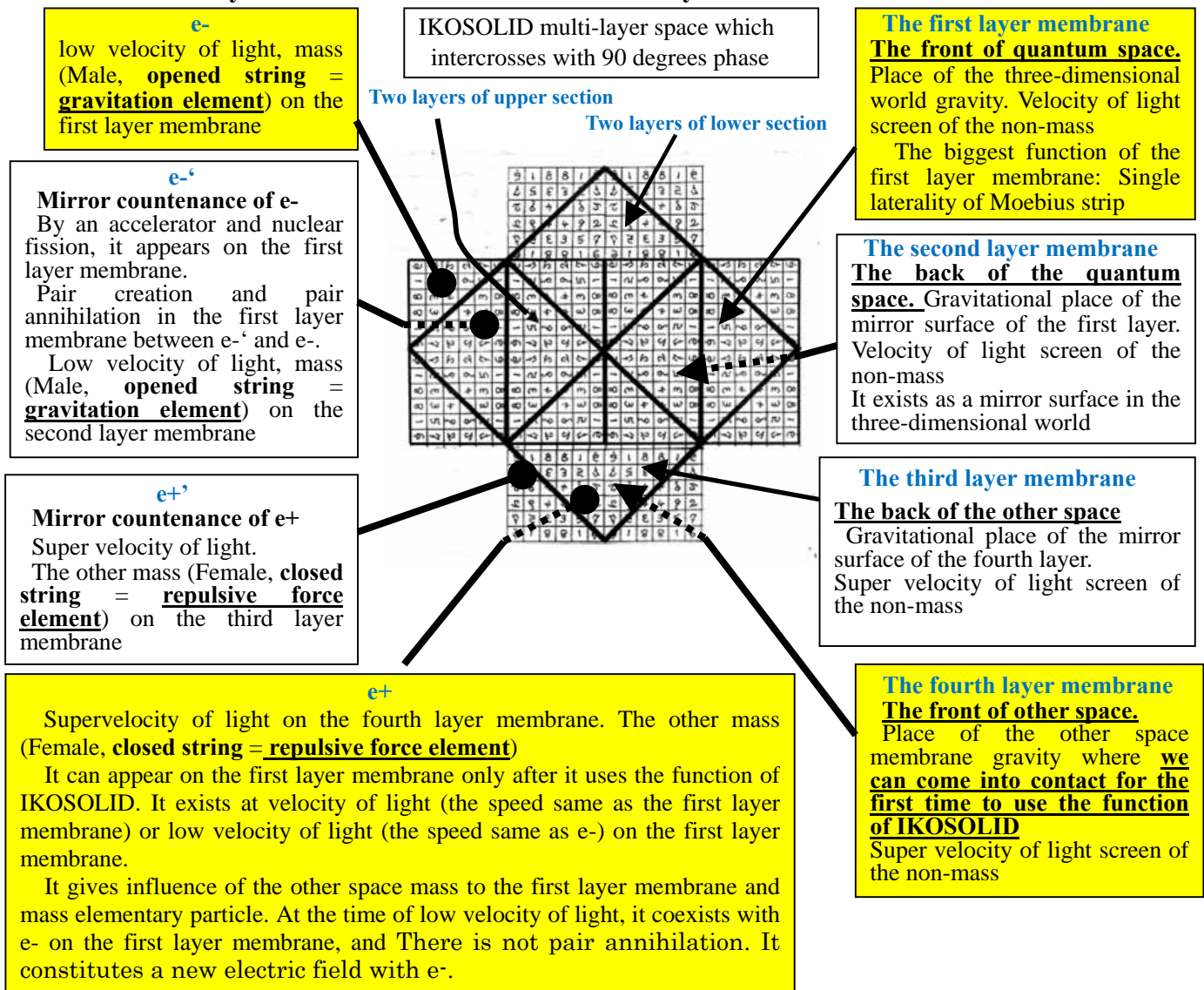
and Electromagnetic- Willpower ” 28

D Reference 32

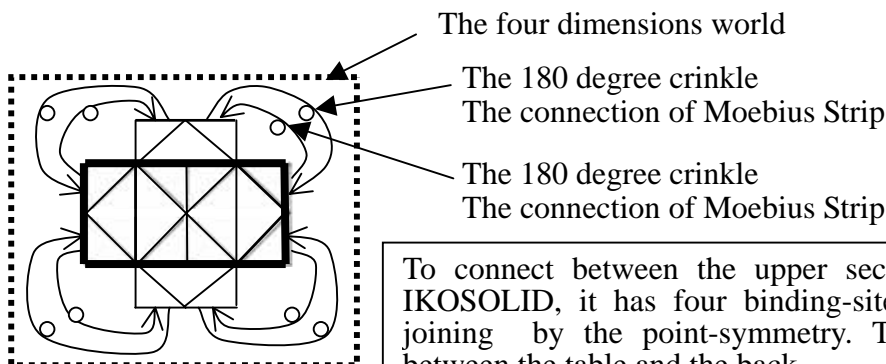
Preface and abstract

1, Multilayered space of IKOSOLID

Connection of the first layer membrane and the fourth layer membrane. Junction of e^- on the first layer membrane and e^+ on the fourth layer membrane



2, 90 degrees phase connection of the first layer membrane of the multilayered space of IKOSOLID and the fourth layer membrane



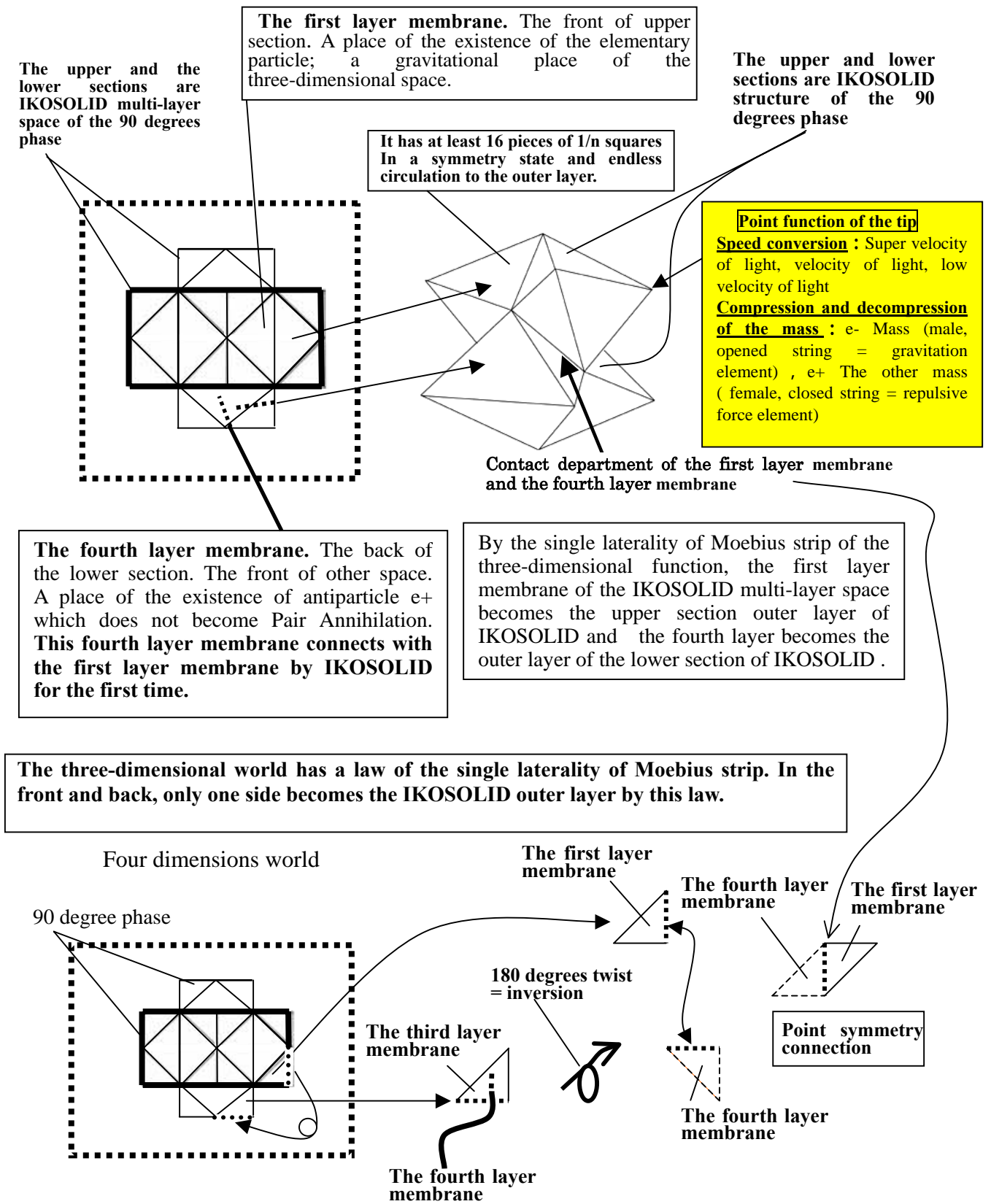
To connect between the upper section and lower Section of IKOSOLID, it has four binding-sites. The four joining is joining by the point-symmetry. That is, it is a connection between the table and the back.

The point-symmetry connection is the connection of Moebius strip.

In the three-dimensional world, it makes Moebius Strip generate the PARADOX of Single Laterality.

2 , Relations of structure, the function of IKOSOLID and IKOSOLID multi-layer space

(Detailed reference : 2011 Koei Endo Ikuyo Endo K.I.DIAGRAM The Functional Model of Multiple Universe IKOSOLID)



The text Part 2

B, Low velocity of light of super velocity of light e+

"Equal speed for low velocity of light e-"

Change in quality of the gravitational place Outbreak of the repulsive force

Change in quality of the electromagnetic field Birth of the new electricity and electric wave of a repulsive force element and the gravitation element coexistence (Coexistence electric field of low velocity of light e- "male, opened string = gravitation element" and the low velocity of light e+ "female, closed string = repulsive force element", and Decrease of the magnetic field)

B - 1 Low velocity of light of super velocity of light e+

"Equal speed for low velocity of light e-"

B - 2 - 1 e + to have made low speed of light at the oscilloscope. . . . 6

B - 1 - 2 The explanation of the oscilloscope image 7

B - 1 - 3 The oscilloscope experiment whole view 7

B - 2 The basic principle 8

B - 2 - 1 $1 / n$ Square 8

B - 2 - 2 Junction of a signature wave (low velocity of light e-) and the cosine wave (low velocity of light e+) by the $1 / n$ square 11

B - 3 The demonstration experiment

Birth of new electricity and electric wave,
Coexistence of gravitation element e- (low velocity of light) and repulsive force element e+ (low velocity of light) 14

B - 3 - 1 Proof experiment 1

Change in quality of the electric field in the line
Coexistence of gravitation element e- (low velocity of light) and repulsive force element e+ (low velocity of light) 15

B - 3 - 2 Proof experiment 2

Change in quality of the electric field out of the line
Coexistence of gravitation element e- (low velocity of light) and repulsive force element e+ (low velocity of light) 21

B - 3 - 3 Proof experiment 3

The new magnetic field that decreases magnetic flux,
Change in quality of the magnetic field 25

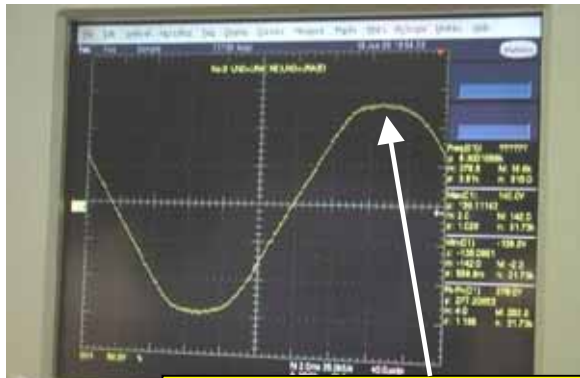
B - 4 Characteristic of the new electricity and the electric wave 26

B - 5 The impedance measurement about IKOSOLID 27

**B - 1 Low velocity of light of super velocity of light e+
"Equal speed for low velocity of light e-"**

B - 2 - 1 e + to have made low speed of light at the oscilloscope.

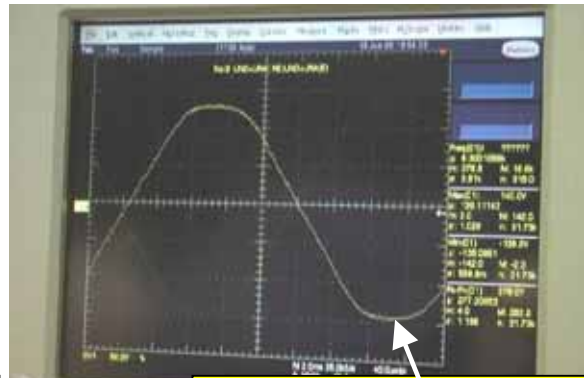
A - 5 The oscilloscope image (30-frame / second Excerpting from the stationary image)
June 19th in 2005 19 : 54 : 00



e- to have made (stationary) sub speed of light 1/30 seconds image

The stop

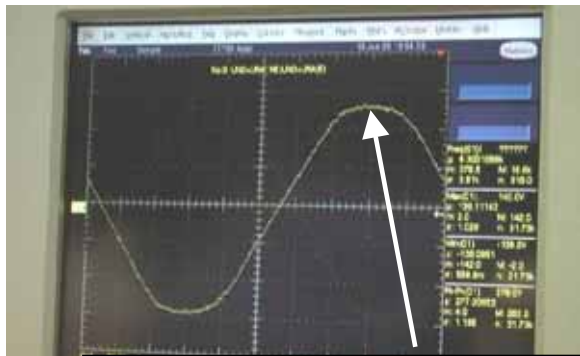
2005 - 06 - 19 - 19 - 54 - 00 - 08



e + to have made (stationary) speed of light 1/30 seconds image

The turning-over

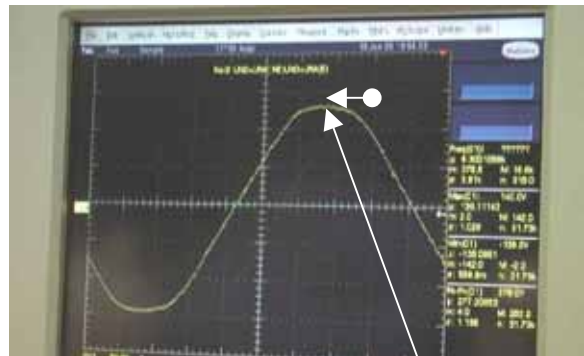
2005 - 06 - 19 - 19 - 54 - 00 - 09



Sub speed of light e - (stationary) and speed of light e + (stationary) 2/30 seconds image

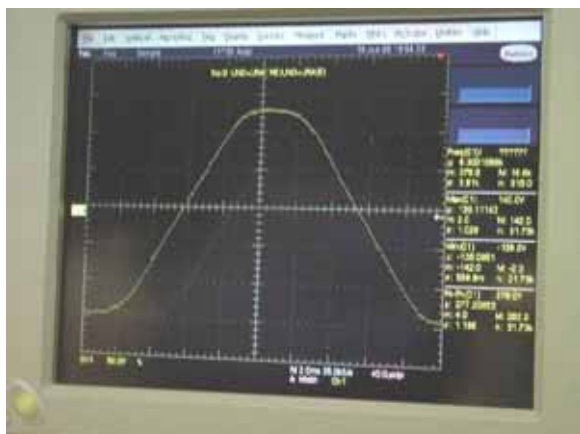
The turning-over

2005 - 06 - 19 - 19 - 54 - 00 - 11

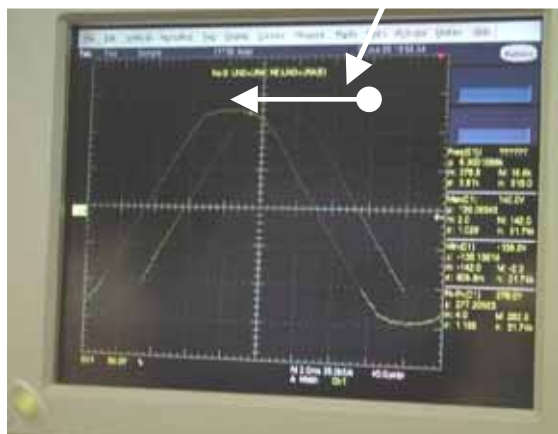


low speed of light e + and e - (Fluid 1/4 corner spin) 5~6/30 seconds image

2005 - 06 - 19 - 19 - 54 - 00 - 13



2005 - 06 - 19 - 19 - 54 - 00 - 14



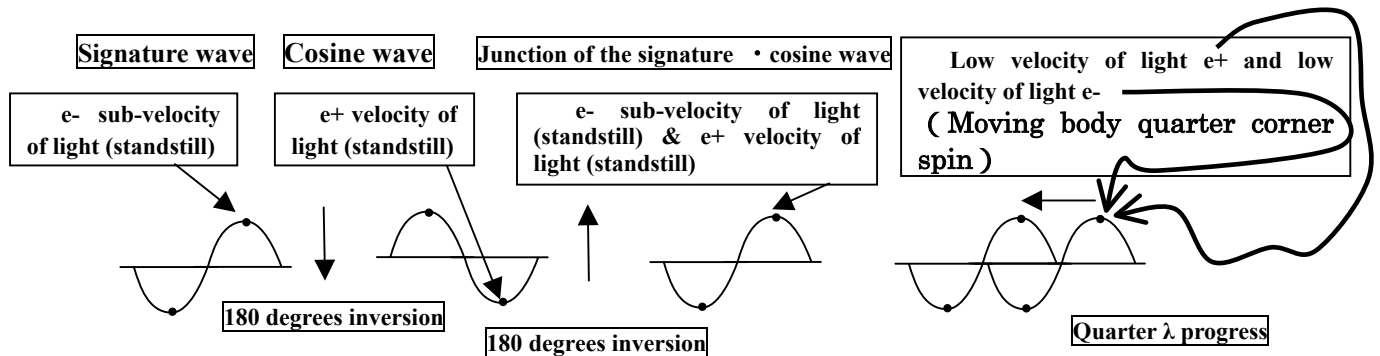
2005 - 06 - 19 - 19 - 54 - 00 - 16

It repeats from . It seems to advance while turning around the human eyesight like the screw.
~ (30-frame / second 5~6 frames in still image) (30-frame / second 5~6 frames in still image)
~ and almost same time

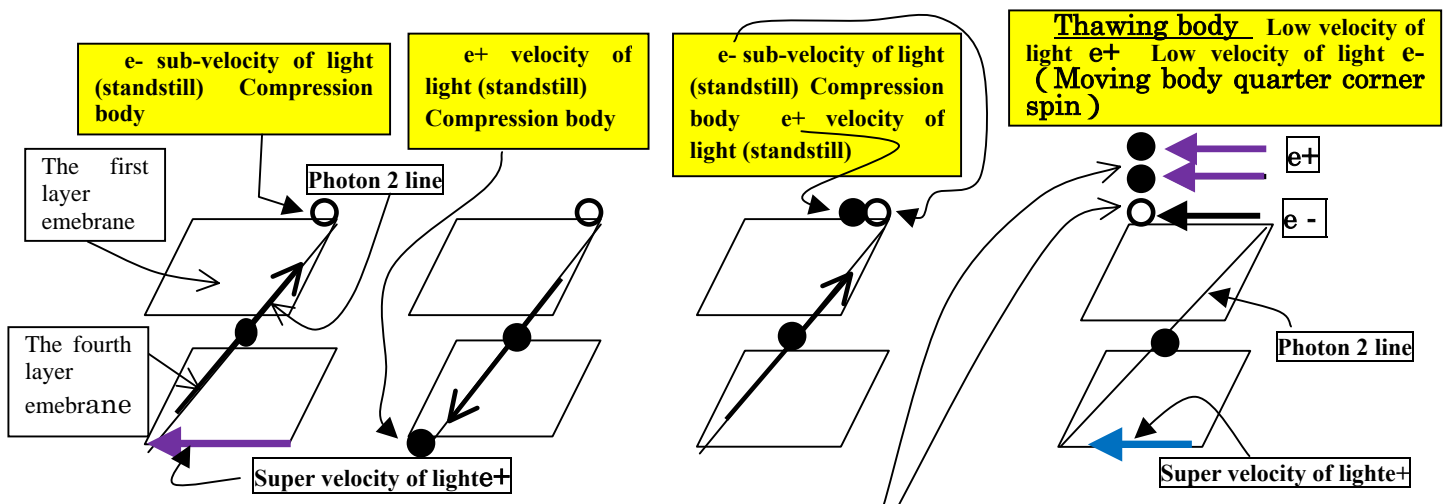
B - 1 - 2 The explanation of the oscilloscope image

- 3 Establishment, success of the complete inversion connection junction wave pattern of a signature wave and the cosine wave Document J-2

The outbreak of the positron. in a line without pair annihilation by IKOSOLID. A signature wave from the right through the left (electron e^-) and a cosine wave to flow from the left through the right (positron e^+), these two different flows joined as a special signature wave of one.



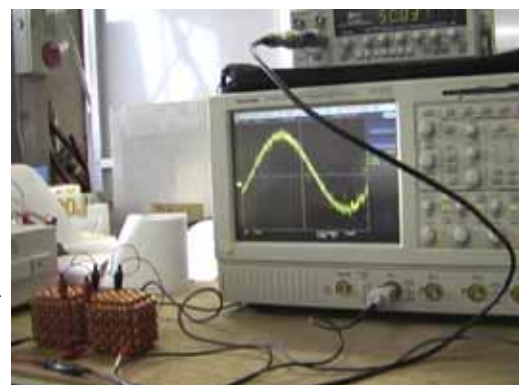
It repeats from . It seems to advance while turning around the human eyesight like the screw.
 ~ (30-frame / second 5~6 frames in still image) (30-frame / second 5~6 frames in still image)
 ~ and almost same time



Because super velocity of light e^+ became low velocity of light e^+ , a gap (compression) of the slowdown is defrosted on the first layer membrane. As a result, it becomes the power amplification unlike electromagnetic induction. In other words it becomes the power amplification without the voltage and electric currents increasing. This is a repulsive force element effect of low velocity of light e^+ . (Reference: p.15 proof experiment 1) This compression and thawing show outbreak of the repulsive force. There is no power amplification in the low velocity of light thawing of the sub-velocity of light compression of e^- . Acceleration is basic in the gravitation. Slowdown is basic in the repulsive force.

B - 1 - 3 The oscilloscope experiment whole view

This oscilloscope experiment of B is a continuation oscilloscope experiment of p.6 velocity of light of super velocity of light e^+ of this paper A-1-1. Toward you IKOSOLID (a male and female joint).



B - 2 The basic principle

It shows Junction of Signature wave (low velocity of light e-) and cosine wave (low velocity of light e+). by the $1/n$ square. Principle of e+ of the super velocity of light becoming e+ of the low velocity of light. Principle to constitute the electric field on the first layer membrane where low velocity of light e+ coexists with low velocity of light e-. With these principles, it is based on the 720 degrees phase turn of the $1/n$ square to constitute the outer layer of IKOSOLID. In IKOSOLID, the upper section and the lower section are solids of the 90 degrees phase. Eight pieces in the outer layer of the upper section show the 720 degrees phase turn with the first layer membrane and the second layer membrane. Eight pieces of lower berths show the 720 degrees phase turn with the third layer membrane and the fourth layer membrane.

IKOSOLID fixed number is "16". it shows the minimum number of sheets of the $1/n$ square on the upper section and the lower section.

B - 2 - 1 $1/n$ Square

1/n square of the upper section of IKOSOLID

The second layer membrane

The mirror surface world

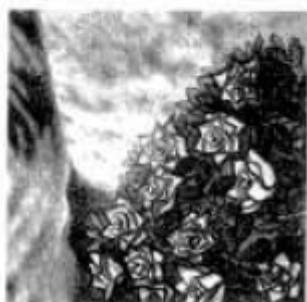


The second layer membrane

The mirror surface world

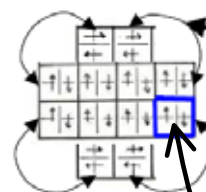
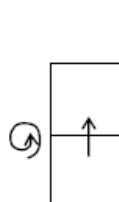


The first layer membrane



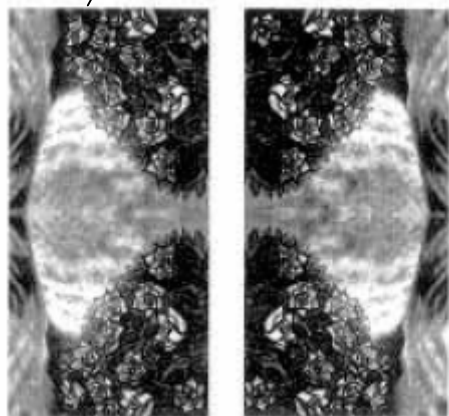
The first layer membrane

The first layer membrane runs after the second layer membrane. As for two membranes, 360 degrees turns. This is three-dimensional world space. As for the second layer membrane, it is treated as an imaginary number as the mirror world.

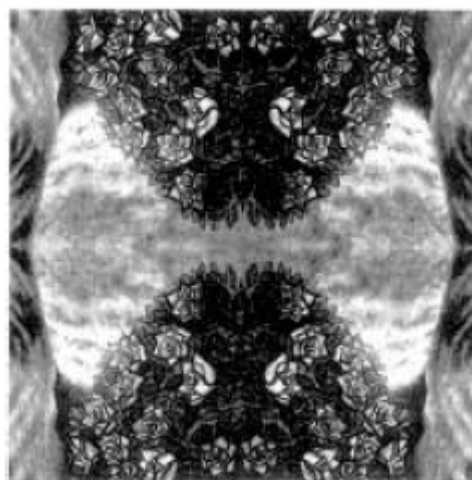


Connect each neighboring two sides. Then, one IKOSOLID appears. The 90 degree topological transformation

The first layer membrane runs after the second layer membrane. As for two membranes, 360 degrees turns.

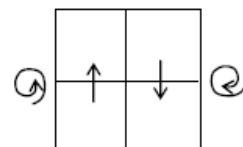


1/n square in the outer layer of the upper section of IKOSOLID



720 degrees phase turn with the first layer membrane and the second layer membrane.

The second layer membrane runs after the first layer membrane. As for two membranes, 360 degrees turns.



1/n square in the IKOSOLID lower section

The fourth layer membrane



The third layer membrane
The mirror surface world

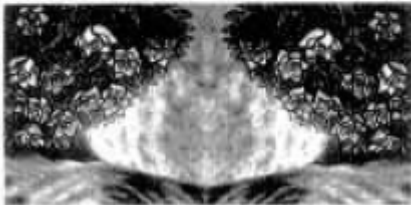


The fourth layer membrane

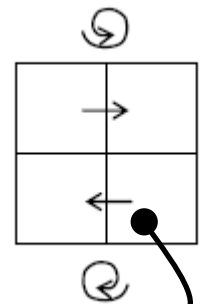
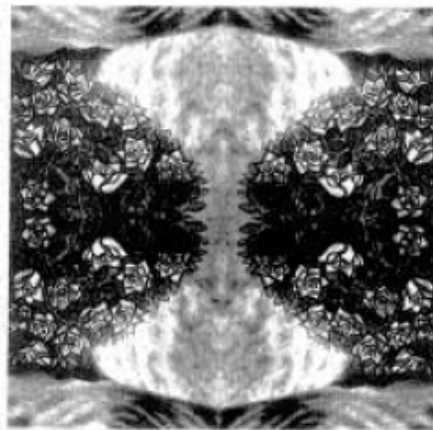


The third layer membrane
The mirror surface world

The fourth layer membrane runs after the third layer membrane. As for two membranes, 360 degrees turns.



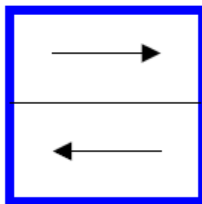
1/n square in the outer layer of the lower section of IKOSOLID



The third layer membrane runs after the fourth layer membrane. As for two membranes, 360 degrees turns.

720 degrees phase turn with the fourth layer membrane and the third layer membrane.

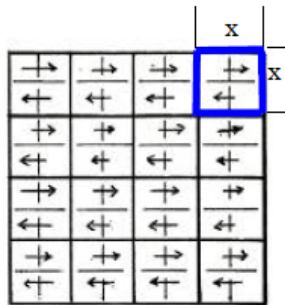
Function of the 720 degrees phase turn of the 1/n square: The velocity of light e+ and the low velocity of light e+ on the first layer membrane of super velocity of light e+ on the fourth layer membrane. And a principle of the structure of the new electric field that low velocity of light e- coexists to the same direction with low velocity of light e+ on the first layer membrane. / As for the 1/n square, there are at least 16 pieces to the outer layer of IKOSOLID (IKO SOLID fixed number 16) The condition is symmetry (the side, length, slant), endless circulation



Real Image Picture = 1/n square

720 degree phase rotation

REVOLVING DOOR becomes the vehicle with particle & antiparticle to join our universe and other universe through BLACK Hole & WHITE Hole.



Plane Magic Square

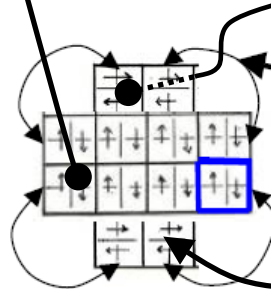
K.I. Theorem

$$n = 16x^2$$

n is the division total of Plane Magic Square. 16 is fixed number of IKOSOLID

The first layer membrane

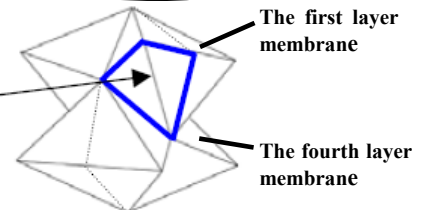
The fourth layer membrane



Connect each neighboring two sides. Then, one IKOSOLID appears. The 90 degree topological transformation

Real Image Picture = 1/n square on IKOSOLID

the symmetry movement by 1/n square, the endless circulates in the surface of IKOSOLID.

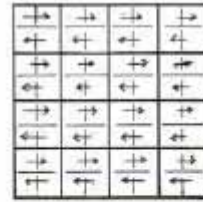
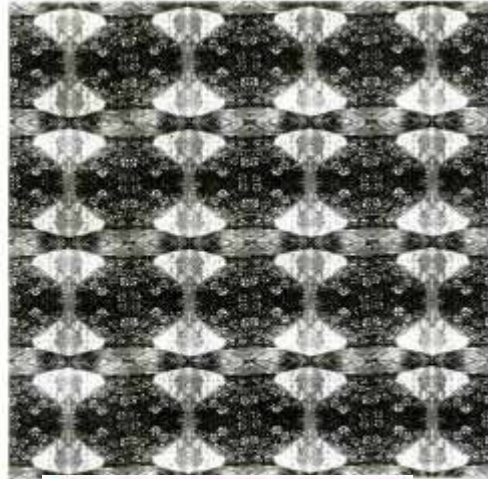


Solid Magic Square of IKOSOLID

The condition the 1/n square on the outer layer of IKOSOLID



The 1/n square

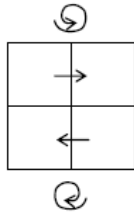


$$1^2 \times 16 = n$$

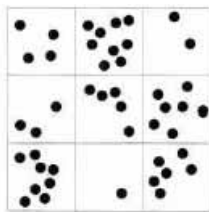
$$1^2 \times 16 = 16$$



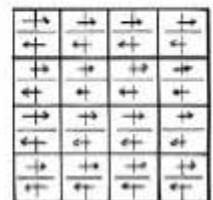
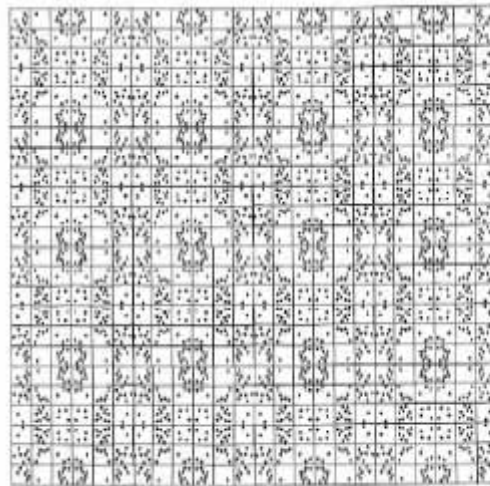
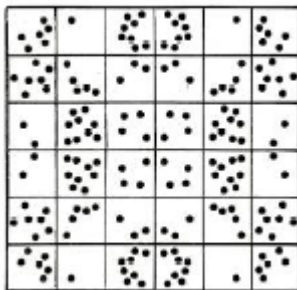
Real picture 16



The 1/n square, there are at least 16 pieces to the outer layer of IKOSOLID (IKOSOLID fixed number 16) The condition the 1/n square on the outer layer of IKOSOLID is symmetry (the side, length, slant), endless circulation.



The 1/n square

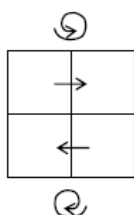


$$1^2 \times 16 = n$$

$$1^2 \times 16 = 16$$



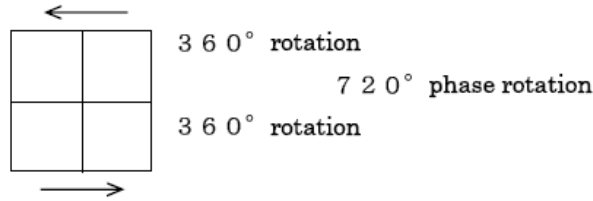
Real picture 16



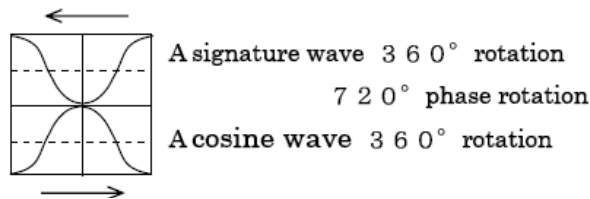
B - 2 - 2 Junction of a signature wave (low velocity of light e-) and the cosine wave (low velocity of light e+) by the $1/n$ square

② - 4 An extract of the article about an associate perfection inversion connection junction wave pattern and the complete inversion connection junction wave pattern. . . . cf. Study of connecting point with three-dimensions and four-dimensions by pictorial art The minus -second article The minus -fourth article

A A signature wave and cosine wave about $1/n$ square and $1/n$ cube



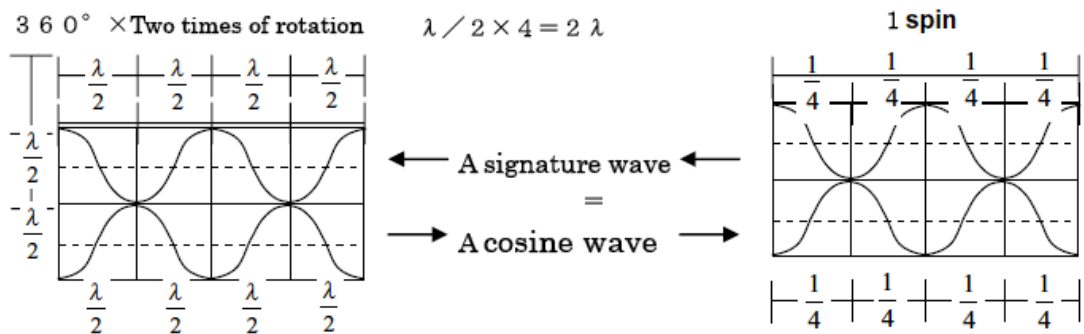
B A signature wave and cosine wave and $1/n$ square (Figure B-1)



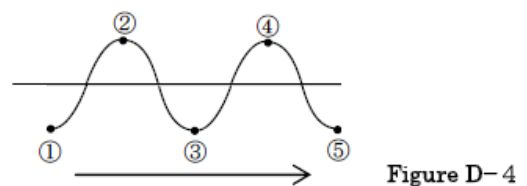
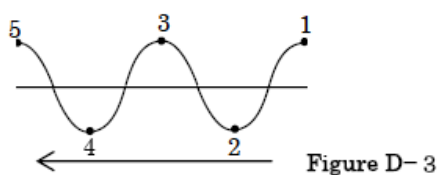
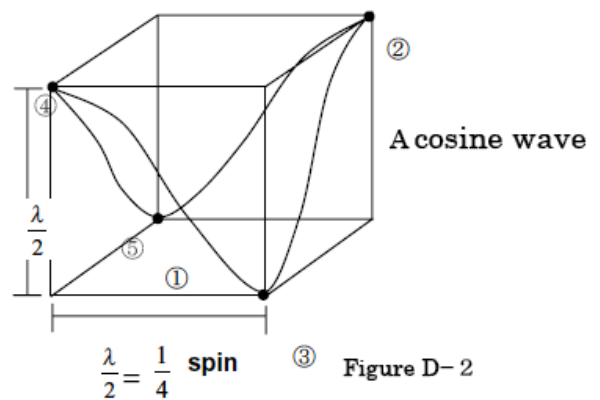
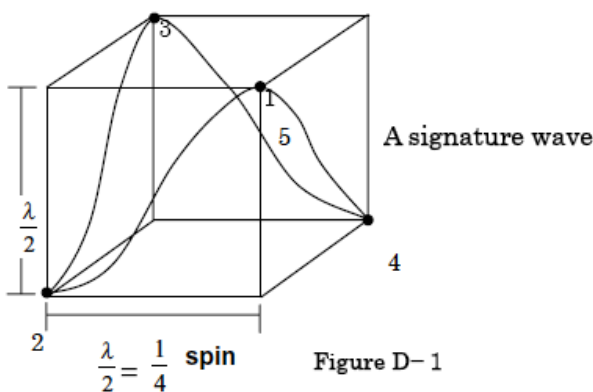
C λ (lambda) exercise and tetragonal movement

λ movement

angular movement



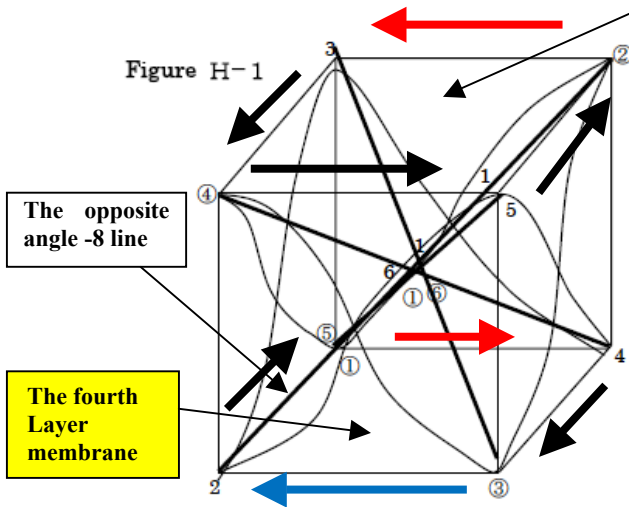
D Moving a signature wave and the cosine wave from $1/n$ squares to $1/n$ cube



E We move a signature wave and the cosine wave moved in a 1/n cube each in D, in one 1/n cube together.

F A diagonal (-8 line) enters in the tetragonal. Persistent Electricity occurs by this diagonal(-8 line) movement.

The first layer membrane



The λ motion of a signature wave and the cosine wave set up on the wall of the cube takes place of corner spin motion of the square of the top surface and the lower part of the cube. Because an opposite angle -8 route of the lower part is connected to the top surface, a Klein bottle with the first layer membrane and the fourth layer membrane is established.

Junction of a signature wave and the cosine wave

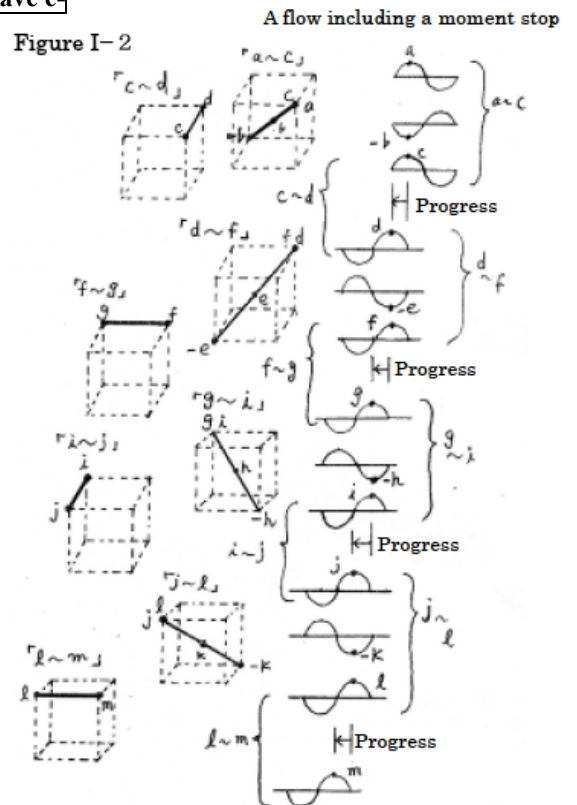
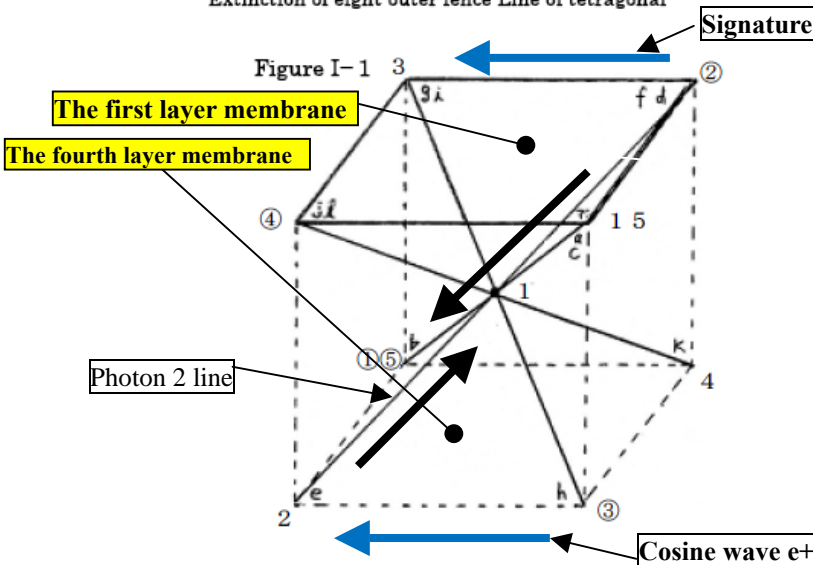
- ← Low velocity of light e^- of the upper section 3
- Super velocity of light e^+ of the lower section 4

The direction of the arrow becomes same by the connection of the opposite angle -8 line. $3 = 2$

G A signature wave (a positron) and the cosine wave (an electron) that became the spin movement let a complete inversion connection junction wave pattern form via the IKOSOLID course of the diagonal (-8 line).

I-1 By the IKOSOLID course of the diagonal(-8 line)
Extinction of eight outer fence Line of tetragonal

I-2 We show sine wave movement a -m of document J-2
by tetragonal and opposite angle -8 line movement



In the junction of a signature wave (low velocity of light e^-) and the cosine wave (low velocity of light e^+) on the first membrane, the basic principle from 1/n square and the basic principle (p.6) from an oscilloscope image arrives at Klein bottle by the IKOSOLID function, too. The object of Klein bottle is the first layer membrane and the fourth layer membrane.

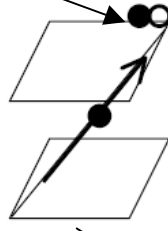
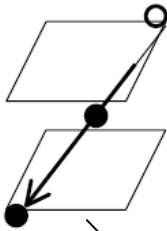
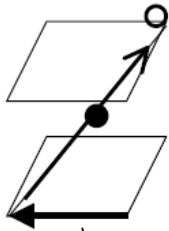
To here, the extract from the minus 2 article

B - 2 - 2 Repulsive force and oscilloscope image

The principle of B - 3 Proof experiment 1-3

The compression of another mass which is due to the deceleration for making supervelocity of light $e +$ low speed of light.

Compression of the other mass by the slowdown of super velocity of light $e +$

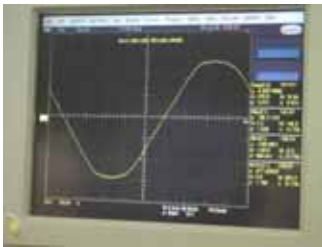
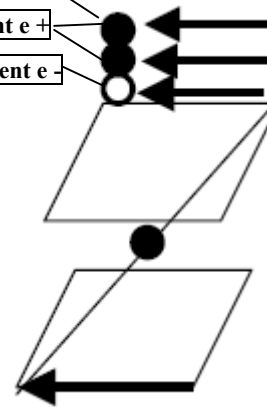


Birth of the new electricity and the electric wave

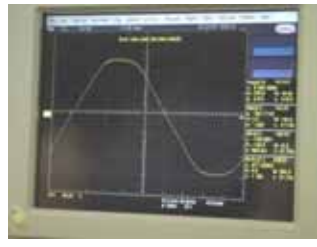
Thawing of the compression of the other mass

Repulsion element $e +$

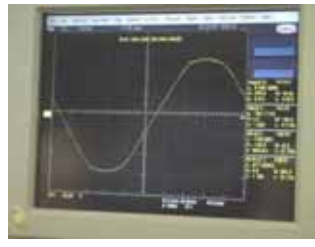
Gravitation element $e -$



Signature wave



Cosine wave

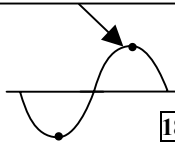


Junction of a signature wave and the cosine wave

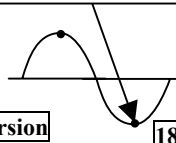
$e -$ to have made (stationary) sub speed of light $1/30$ seconds image

$e +$ to have made (stationary) speed of light $1/30$ seconds image

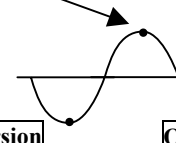
$e -$ to have made (stationary) sub speed of light and $e +$ to have made (stationary) speed of light. Compression of the other mass by the slowdown of super velocity of light $e +$ $2/30$ seconds image ~ $5 \sim 6$ seconds image



180 degrees inversion



180 degrees inversion



Quarter λ progress

$e +$ and $e -$ which joined slow and become low velocity of light $e +$ and low velocity of light $e -$. They become the moving body, and a quarter corner spin works. $5 \sim 6/30$ seconds images

Quarter λ progress Thawing of the compression of the other mass of $e +$

It repeats from . It seems to advance while turning around the human eyesight like the screw. \sim (30-frame / second 5~6 frames in still image) \sim and almost same time (30-frame / second 5~6 frames in still image)

B - 3 The demonstration experiment

Birth of new electricity and electric wave,

Coexistence of gravitation element e^- (low velocity of light) and
repulsive force element e^+ (low velocity of light)

B - 3 - 1 Proof experiment 1

Change in quality of the electric field in the line

Coexistence of gravitation element e^- (low velocity of light) and
repulsive force element e^+ (low velocity of light)

15

B - 3 - 2 Proof experiment 2

Change in quality of the electric field out of the line

Coexistence of gravitation element e^- (low velocity of light) and
repulsive force element e^+ (low velocity of light)

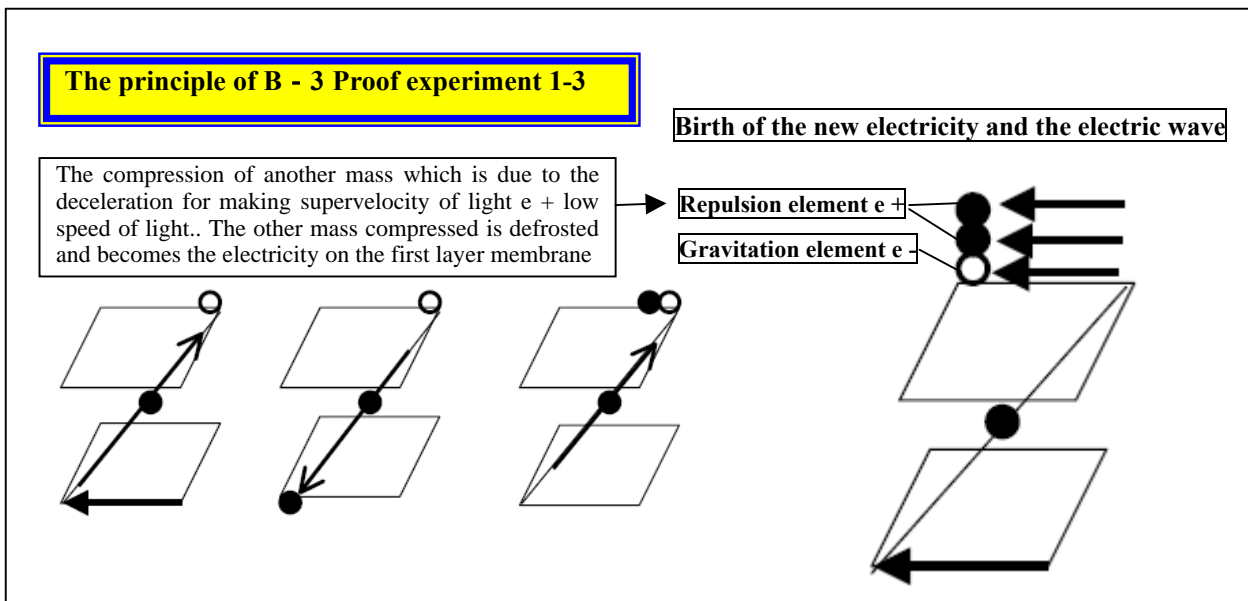
21

B - 3 - 3 Proof experiment 3

The new magnetic field that decreases magnetic flux

Change in quality of the magnetic field

25



B - 3 - 1 Proof experiment 1

Change in quality of the electric field in the line

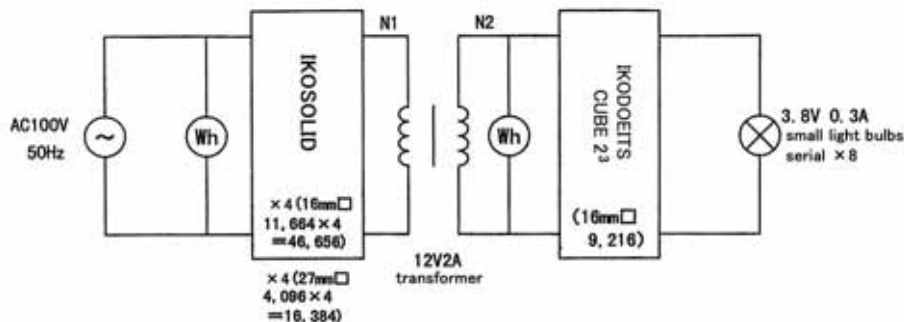
Coexistence of gravitation element e- (low velocity of light) and
repulsive force element e+ (low velocity of light)

Reference : Electricity loss reduction device Document 2 - 1 September, 2003. Unification of the
Electromagnetic Willpower and Gravity of Four-Power of the Space : Proof by ~ for Digest

By this proof experiment, we prove the outbreak of low velocity of light e+ in the line in the measurement of the particularly second side. In the primary side, you pay attention to the improvement of the power factor! 0.73→1.00PF Second side 1.00→1.00PF

Both the primary side and the second side are increase 2% of the electric current in an experiment for 16 hours. The increase of the effective electricity is 51% of the first sides. The second side is 204.06% of amplification. There is not most of the increase of the electric current= The amplification of the electricity of the AB effect !

2. Experiment to reduce power loss and leakage flux of the transformer in transformation stage by the IKOSOLID and the IKODOEITSCUBE.
(power factor of transformer =1 and increase of general electric power)



We did an experiment to verify that the IKOSOLID or the IKODOEITSCUBE connection was to reduce the transformer loss itself. First, the voltage, current, electric power, power factor and so on of the primary side and ones of the secondary side without IKODOEITSCUBE connection were measured by the integrating wattmeter. Then, the data with 4 IKOSOLID's (16mm□11,664×4=46,656) and 4 IKOSOLIDs (27mm□4,096×4=16,384) on the primary side and with IKODOEITSCUBE 2³ (16mm□9,216) on the secondary side were measured.

The measurements of both were done for 16 hours each and the results were: the voltage ratio of the N1 side (the primary side voltage) to the N2 side (the secondary side voltage) with the IKODOEITSCUBE and the IKOSOLID's was the same as one without the REALCUBE and the IKOSOLID's (fluctuation in the range of AC 13V): while the primary side integrated voltage without the IKODOEITSCUBE and the IKOSOLID's was 147.50wh, one with the IKODOEITSCUBE and the IKOSOLID's was 224.06wh: while the secondary side integrated voltage without the IKODOEITSCUBE and the IKOSOLID's was 41.62wh, one with the IKODOEITSCUBE and the IKOSOLID was 126.55wh.

The result of the experiment above indicates that overall electric power increases, inductance component loss, copper loss, and iron loss decrease, and general coefficient K increases much more with the IKODOEITSCUBE or the IKOSOLID on primary side and secondary side of the transformer. Considering the decrease of power loss, we can assume that the leakage influx caused by the inductance component of the transformer and the amount of electromagnetic waves from the overall transformer decreased.

3. Experiment measurement 1

“Fluctuation of the active power on the primary side of transformer 12V2A(16 hours)”

A-1: Without the IKODOEITSCUBE

B-1:
 Connect to the inlet side of the transform } Two sets of 4 parallel IKOSOLID's
 27mm□ 1/n square PC boards 4,096×4=16,384 (pieces)
 16mm□ 1/n square PC boards 11,664×4=46,656 (pieces)

Connect to the outlet side of the transform } IKODOEITSCUBE 2³
 16mm□1/n square PC boards 9,216(pieces)

○ Measurement results

A-1: Without the IKODOEITSCUBE

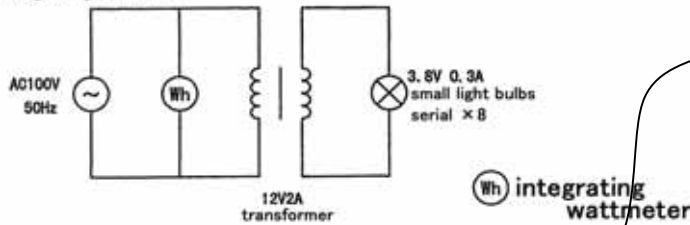
..... By the integrating active power meter 16 hours : 147.50wh

B-1: With the IKOSOLID's and the IKODOEITSCUBE

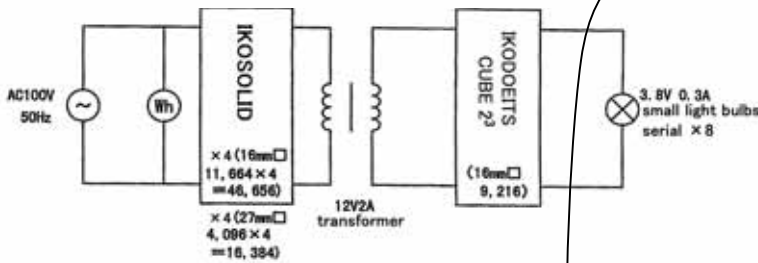
..... by the integrating active power meter 16 hours: 224.06wh

● Active power amplification factor: 51.90%

Wiring diagram A-1



Outbreak of low velocity of light e+ in the effective power amplification
 $V \times A \times 1PF = W < \text{Measurement } W$
 $103.16v \times 0.142A \times 1PF = 14.64872w < 15.7w$
 Measured value - Calculated value = e+
 $15.7w - 14.7w = 1w$
 e+ and the e- total Only e- e+



IKOSOLID makes 0.6 power factor 1.0PF of the inverter. The power amplification for such a power factor improvement assumes it the amplification of e-. It assumed power amplification not to affect the voltage and the amplification of the electric current outbreak of e+.
 A decrease in reactive power = electricity loss by the power factor improvement decreases by this experiment 8.7var →0.0var (reactive power)
 In addition, it makes W of the incandescent electric lamp of the 100v100w standard of power factor 1.0 real measurement 87w 112w.

7. Experiment data (experiment measurement 1●3) primary side of the transformer 16 hours

September 4, 2003 without the IKODOEITSCUBE

September 14, 2003

IKOSOLID (27mm□16,384 pieces +16mm□46,656 pieces) the primary side
 IKODOEITSCUBE 2³ (16mm 9,216 pieces) the secondary side

```
INTEGRATOR START
00000:00:00
101.77 V      0.127 A      0.27 Ap
0.0096kW     0.0129kVA     0.0087kvar
0.7386(PF)   42.39 DEG     50.034 Hz
INTEGRATOR
TOTAL TIME 00000:00:00
0.0000 Ah   0.00000kWh(+)
0.00000kWh(-)
INTERVAL TIME 00000:00:00
0.0000 Ah   0.00000kWh(+)
0.00000kWh(-)
00000:30:00
100.48 V     0.124 A     0.26 Ap
```

You pay attention to power factor improvement in the primary side!
0.73 1.00PF

```
INTEGRATOR START
00000:00:00
103.16 V     0.142 A     1.10 Ap
0.0157kW    0.0157kVA   0.0000kvar
1.0000(PF)  0.00 DEG    50.035 Hz
INTEGRATOR
TOTAL TIME 00000:00:00
0.0000 Ah   0.00000kWh(+)
0.00000kWh(-)
INTERVAL TIME 00000:00:00
0.0000 Ah   0.00000kWh(+)
0.00000kWh(-)
```

4. Experiment measurement 2

“Fluctuation of the active power on the secondary side of the transformer 12V2A (16hours)”

A-2: Without IKODOEITSCUBE

B-2: Two sets of 4 parallel IKOSOLID's

Connect to the inlet side of the transformer }
 27mm□ 1/n square PC boards 4,096×4=16,384 (pieces)
 16mm□ 1/n square PC boards 11,664×4=46,656 (pieces)

Connect to the outlet side of the transformer }
 IKODOEITSCUBE 2³
 16mm□1/n square PC boards 9,216(pieces)

o Measurement results _____

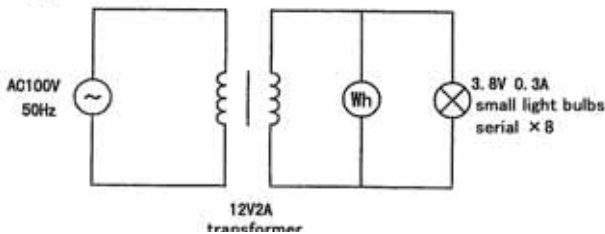
A-2: Without the IKODOEITSCUBE

by the integrating active power meter 16 hours 41.62wh

B-2: With the IKOSOLD's and the IKODOEITSCUBE

by the integrating active power meter 16 hours 126.55wh

Wiring diagram A-2



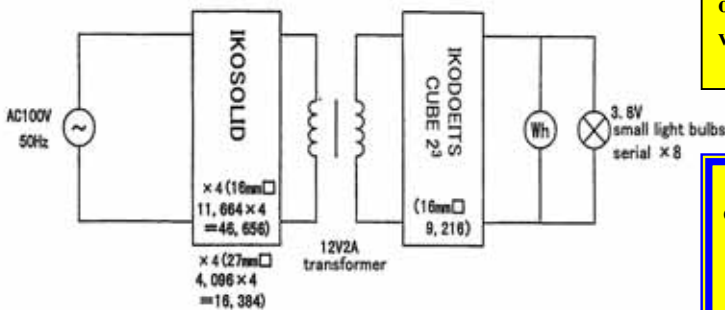
● **Active power amplification factor 204.06%**

The amplification of the effective electricity in the second side
 By IKOSOLID connection, the effective electricity of the second side of power factor 1.0PF becomes 204.06% of amplification.

There is not most of the increase of current then (only 2% increase). When super velocity of light e+ slows in low velocity of light e+, the compressed other mass is defrosted at the three-dimensional gravitational place of the first layer membrane. In the repulsive force, slowdown from super velocity of light is important. In gravitation acceleration from low velocity of light to sub-velocity of light is important.

Reference : this paper p.7 B - 1 - 2

Wiring diagram B-2



In the second side, you pay attention to the voltage and an electric current and relations with the superficial electricity VA.

$$\times A = VA < \text{Measurement } VA$$

$$13.27v \times 0.194A = 2.57438VA < 7.9VA$$

$$7.9VA - 2.6VA \text{ "e - " } = 5.3VA \text{ "e + " }$$

(experiment measurement 2●4) the secondary side of the transformer 16 hours

September 15, 2003

without IKODOEITSCUBE

September 13, 2003

IKOSOLID

(27mm 16,384 pieces + 16mm 46,656 pieces) the primary side

IKODOEITSCUBE 2³

(16mm 9,216 pieces) the secondary side

```
INTEGRATOR START
00000:00:00
13.04 V      0.189 A      0.258 Ap
0.0026kW    0.0026kVA    -0.0000kvar
-1.0000(PF) - 0.00 DEG    49.986 Hz
INTEGRATOR
TOTAL TIME 00000:00:00
0.0000 Ah   0.00000kWh(+)
0.00000kWh(-)
INTERVAL TIME 00000:00:00
0.0000 Ah   0.00000kWh(+)
0.00000kWh(-)
```

```
INTEGRATOR START
00000:00:00
13.27 V      0.194 A      1.05 Ap
0.0079kW    0.0079kVA    0.0000kvar
1.0000(PF)  0.00 DEG    50.027 Hz
INTEGRATOR
TOTAL TIME 00000:00:00
0.0000 Ah   0.00000kWh(+)
0.00000kWh(-)
INTERVAL TIME 00000:00:00
0.0000 Ah   0.00000kWh(+)
0.00000kWh(-)
```

5. Experiment measurement 3

“Fluctuation of the current on the primary side of the transformer 12V2A (16 hours)

A-3: Without the IKODOEITSCUBE

B-3: Two sets of 4 parallel IKOSOLID's

Connect to the inlet side of transformer	}	27mm□ 1/n square PC boards 4,096×4=16,384 (pieces)
		16mm□ 1/n square PC boards 11,664×4=46,656 (pieces)
Connect to the outlet side of the transformer	}	IKODOEITSCUBE 2 ³
		16mm□1/n square PC boards 9,216(pieces)

○ Measurement results

A-3: Without the IKODOEITSCUBE

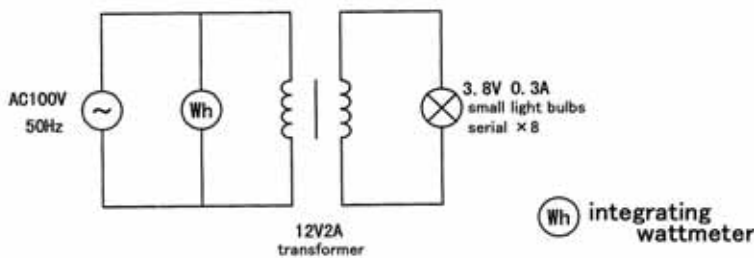
Integrated current value (16 hours): 2.0728Ah

B-3: With the IKOSOLD's and the IKODOEITSCUBE

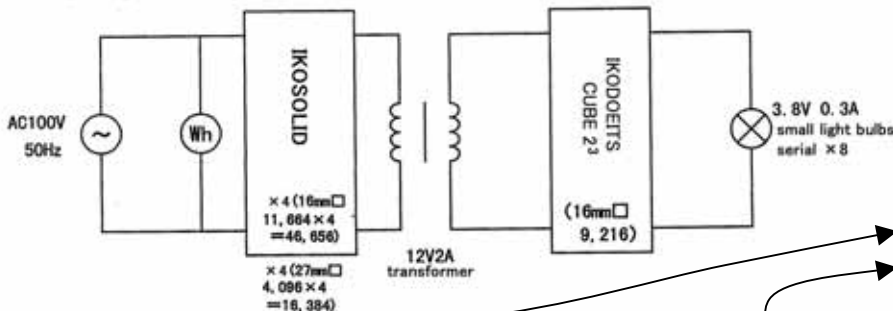
integrated current value (16 hours): 2.1143Ah

● **current amplification factor: 2%**

Wiring diagram A-3



Wiring diagram B-3



No increase of voltage and electric current

Regardless of the amplification of the active-power, there is little increase of the voltage and the electric current. As for this, the side of the 1st and the side of the 2nd are the same. In 16 hours, experimentally, the amplification of the electric current is 2 %. This is the feature of the repulsion element of low speed of light e +.

Gravitation element e - coexists with repulsion element e + in the new electric field. Therefore, it refers to this paper, demonstration experiment 3 to the new magnetic field. It is new electricity's birth.

Electric current of 16 hours

Without IKOSOLID 2.0728Ah

With IKOSOLID 2.1143Ah

Only 2% of increase

```

00016:00:00
102.69 V      0.122 A      0.24 Ap
0.0084kW     0.0125kVA     0.0093kvar
0.6698(PF)   47.95 DEG     49.989 Hz
INTEGRATOR
TOTAL TIME   00016:00:00
2.0728 Ah   0.14750kWh(+)
0.00000kWh(-)
INTERVAL TIME 00000:30:00
0.0619 Ah   0.00424kWh(+)
0.00000kWh(-)
INTEGRATOR STOP
    
```

16hour active-power

51.90% of increase

For power amplification not to affect the current amplification = e+

```

00016:00:00
104.42 V      0.124 A      1.10 Ap
0.0125kW     0.0130kVA     0.0033kvar
0.9661(PF)   14.96 DEG     50.001 Hz
INTEGRATOR
TOTAL TIME   00016:00:00
2.1143 Ah   0.22406kWh(+)
0.00000kWh(-)
INTERVAL TIME 00000:30:00
-0.0613 Ah   0.00626kWh(+)
0.00000kWh(-)
INTEGRATOR STOP
    
```


6. Experiment measurement 4

“Fluctuation of the current on the secondary side of the transformer 12V2A (16hours)”

A-4: Without the IKODOEITSCUBE

B-4:

Two sets of 4 parallel IKOSOLID's

Connect to the inlet side of transformer

27mm□ 1/n square PC boards $4,096 \times 4 = 16,384$ (pieces)

16mm□ 1/n square PC boards $11,664 \times 4 = 46,656$ (pieces)

Connect to the outlet side of the transformer

IKODOEITSCUBE 2³

16mm□ 1/n square PC boards 9,216(pieces)

o Measurement results

A-4: Without the IKODOEITSCUBE

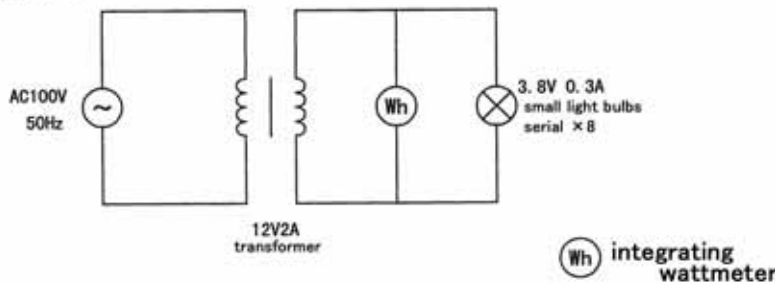
integrated current value (16 hours): 3.0459Ah

B-4: With the IKOSOLD's and the IKODOEITSCUBE

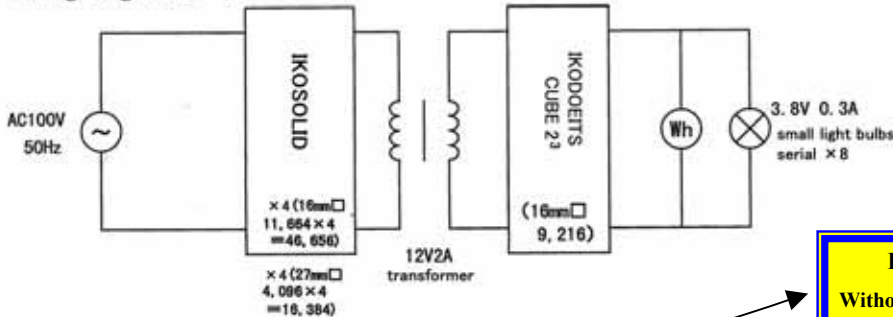
integrated current value (16 hours): 3.1277Ah

● **Current amplification factor 2%**

Wiring diagram A-4



Wiring diagram B-4



No increase of voltage and electric current

Regardless of the amplification of the active-power, there is little increase of the voltage and the electric current. As for this, the side of the 1st and the side of the 2nd are the same. In 16 hours, experimentally, the amplification of the electric current is 2%. This is the feature of the repulsion element of low speed of light e^- .

Gravitation element e^- coexists with repulsion element e^+ in the new electric field. Therefore, it refers to this paper, demonstration experiment 3 to the new magnetic field. It is new electricity's birth.

Electric current of 16 hours
 Without IKOSOLID 3.0459Ah
 With IKOSOLID 3.1277Ah
Only 2% of increase

```
00016:00:00
13.57 V      0.193 A      0.265 Ap
0.0027kW    0.0027kVA      -0.0000kvar
-1.0000(PF) - 0.00 DEG    50.006 Hz
INTEGRATOR
TOTAL TIME  00016:00:00
3.0459 Ah   0.04162kWh(+)
0.00000kWh(-)
INTERVAL TIME 00000:30:00
0.0967 Ah   0.00135kWh(+)
0.00000kWh(-)
INTEGRATOR STOP
```

**16 hour active-power
 204.06% of increase
 For power
 amplification not to
 affect the current
 amplification = e^+**

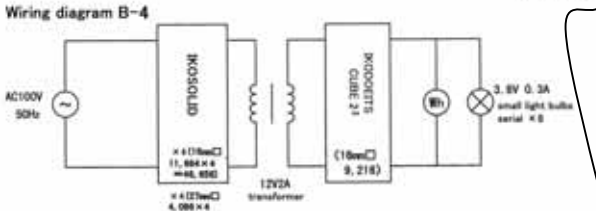
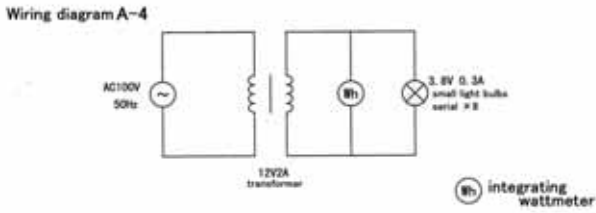
```
00016:00:00
13.57 V      0.196 A      0.98 Ap
0.0079kW    0.0079kVA      0.0000kvar
1.0000(PF)  0.00 DEG      49.960 Hz
INTEGRATOR
TOTAL TIME  00016:00:00
3.1277 Ah   0.12655kWh(+)
0.00000kWh(-)
INTERVAL TIME 00000:30:00
0.0977 Ah   0.00390kWh(+)
0.00000kWh(-)
INTEGRATOR STOP
```

The principle of proof experiment 1" New electricity's birth! "

4. Experiment measurement 2

"Fluctuation of the active power on the secondary side of the transformer 12V2A

(16hours)"



In the second side, you pay attention to relations of voltage v and current A and superficial electricity VA!
 $\times A = VA < \text{Measurement VA}$
 $13.27v \times 0.194A = 2.57438VA < 7.9VA_{\text{Measurement}}$
 $7.9VA - 2.6VA \text{ "e -"} = 5.3VA \text{ "e+"}$

In repulsive element e+ low velocity of light $5.3VA$, there is no indication of the electric current. In other words, the electricity that is not electromagnetic induction. This is the electricity of the AB effect, electricity

INTEGRATOR START

00000:00:00	13.04 V	0.189 A	0.258 Ap
	0.0026kW	0.0026kVA	-0.0000kvar
	-1.0000(PF)	- 0.00 DEG	49.986 Hz
INTEGRATOR			
TOTAL TIME	00000:00:00		
	0.0000 Ah		0.00000kWh(+)
	0.00000kWh(-)		
INTERVAL TIME	00000:00:00		
	0.0000 Ah		0.00000kWh(+)
	0.00000kWh(-)		

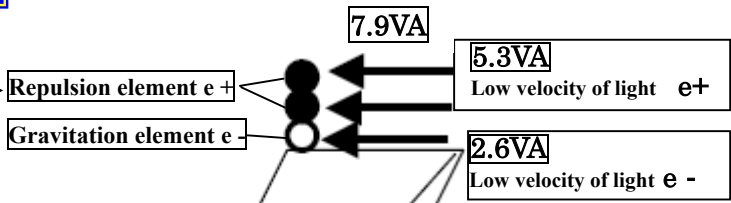
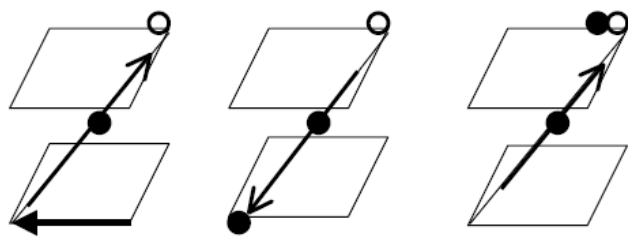
INTEGRATOR START

00000:00:00	13.27 V	0.194 A	1.05 Ap
	0.0079kW	0.0079kVA	0.0000kvar
	1.0000(PF)	0.00 DEG	50.027 Hz
INTEGRATOR			
TOTAL TIME	00000:00:00		
	0.0000 Ah		0.00000kWh(+)
	0.00000kWh(-)		
INTERVAL TIME	00000:00:00		
	0.0000 Ah		0.00000kWh(+)
	0.00000kWh(-)		

The principle of B - 3 - 1 Proof experiment 1-

The compression of another mass which is due to the deceleration for making supervelocity of light e + low speed of light. The other mass compressed is defrosted and becomes the electricity on the first layer membrane

Birth of the new electricity and the electric wave



There is no electromagnetic induction in 5.3VA. 2.6VA is electricity of the electromagnetic induction.

A-2: Without the IKODOEITSCUBE by the integrating active power meter 16 hours 41.62wh

B-2: With the IKOSOLD's and the IKODOEITSCUBE by the integrating active power meter 16 hours 126.55wh

Active power amplification factor 204.06%

A-4: Without the IKODOEITSCUBE integrated current value (16 hours): 3.0459Ah

B-4: With the IKOSOLD's and the IKODOEITSCUBE integrated current value (16 hours): 3.1277Ah

Current amplification factor 2%

00016:00:00

13.67 V	0.193 A	0.265 Ap
0.0027kW	0.0027kVA	-0.0000kvar
-1.0000(PF)	- 0.00 DEG	50.006 Hz
INTEGRATOR		
TOTAL TIME	00016:00:00	
	3.0459 Ah	0.04162kWh(+)
	0.00000kWh(-)	
INTERVAL TIME	00000:30:00	
	0.0967 Ah	0.00135kWh(+)
	0.00000kWh(-)	

INTEGRATOR STOP

16 hours
 Active power
 204.06% of increase
 Current
 2% of increase
 For power amplification not to affect the current amplification = e+

00016:00:00

13.57 V	0.196 A	0.98 Ap
0.0079kW	0.0079kVA	0.0000kvar
1.0000(PF)	0.00 DEG	49.960 Hz
INTEGRATOR		
TOTAL TIME	00016:00:00	
	3.1277 Ah	0.12655kWh(+)
	0.00000kWh(-)	
INTERVAL TIME	00000:30:00	
	0.0977 Ah	0.00390kWh(+)
	0.00000kWh(-)	

INTEGRATOR STOP

B - 3 - 2 Proof experiment 2

Change in quality of the electric field out of the line.

Coexistence of gravitation element e^- (low velocity of light) and
repulsive force element e^+ (low velocity of light)

A positron outbreak effect by IKOSOLID . . . The outbreak effect of the positron (an e^+ positron) to watch for an effect of the attenuation and zero v/m of the electric field strength in normal space by IKOSOLID

Reference : Unification of the Electromagnetic Willpower and Gravity of Four-Power of the Space : Proof
by ~ for Digest

Pencil type LED mini testers usually turn on in electric field strength 350v/m. Even if an electric field strength becomes the 1/4 1/6 even if, furthermore, electric field strength becomes 0 v/m by IKOSOLID, pencil type LED mini testers turn on. In the normal space without the influence of IKOSOLID, at the time of less than lighting smallest electric field strength 350v/m, the LED mini tester does not turn on.

In other words, it is coexistence of low velocity of light e^+ and low velocity of light e^- in electric field out of the line.

- 1 A mini-tester turns on even 1/4 electric field strength of the mini-tester lighting minimum electric field strength (350v / m). A positron outbreak effect to make up for the attenuated electron. (cf. Study of connecting point with three-dimensions and four-dimensions by pictorial art The - 28th article)

At the time of radiation 400v/m more than lighting smallest electric field strength 350v/m from fluorescent lamp AC100v40w, it is mini-tester lighting.

400v/m 3.9mG A photograph extracted from the - 28th article.



Coexistence of low velocity of light e^+ & e^- out of the line

More than mini-tester lighting's smallest electric field strength (350v/m)

e- which was measured Electric field strength	Non-measurement e^+ Estimated electric field strength
More than 350v/m	0v/m

- 28 Paper

Electric field strength of about quarter	Non-measurement e^+
88 v/m	More than 262 v/m

- 28 Paper

Electric field strength of about 1/6	Non-measurement e^+
55v/m	More than 295 v/m

- 29 Paper

Electric field strength of zero	Non-measurement e^+
0 v/m	More than 350 v/m

- 37 & - 38 Paper

A mini-tester does conduction in more than 350 electric field strength v/m, and LED turns on. However, quarter, 1/6 are 0 v/m an electric field strength more, but It makes conduction, and LED turns on. It shows that e^+ making up for diluted e^- coexists.

Pencil type LED universal mini-tester

No.2035-AHL Kaneko mill Co., Ltd.

TriField® Meter

(an electric field, a magnetic field, microwave)

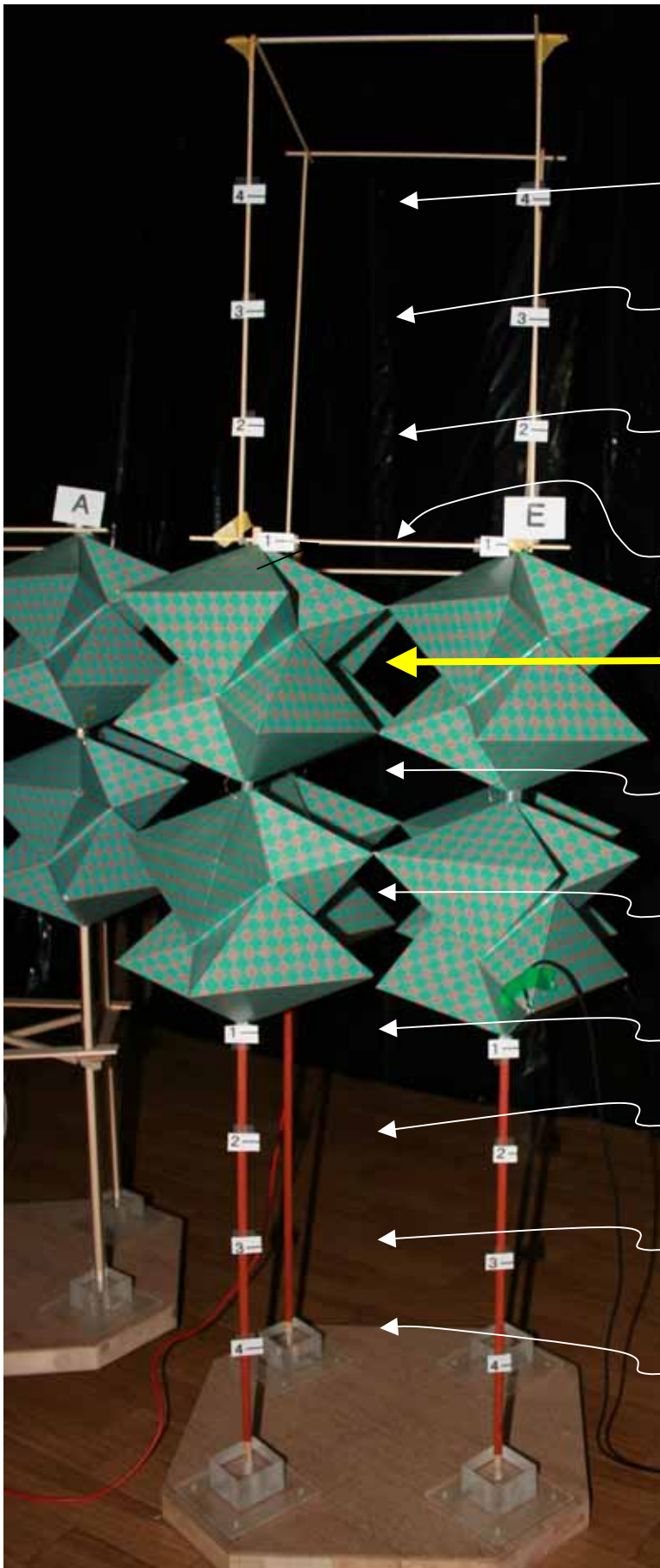
TriField® Meter Model 100 XE

Product made in United States

- 3 even if, furthermore, electric field strength becomes 0 v/m by IKOSOLID, pencil type LED mini testers turn on. The mini-tester lighting photograph of the positron outbreak effect to make up for the electron which became a zero v/m.

cf. Study of connecting point with three-dimensions and four-dimensions by pictorial art The - 37th article

A radiation measurement It is mini-tester lighting in ~ entirely A radiation measurement It is mini-tester lighting in ~ entirely



e- Electric field strength e+ Electric field strength
Magnetic field strength decreases according to
an electric field strength decrease in e-
e+ Electric field strength affects the decrease of the
magnetic field. Birth of the electric wave of the AB
effect= Birth of a new electric wave

Top 4 23 v / m 0.6m G

From approximately 50cm higher

Central top border of the mini-tester lighting

Top 3 47 v / m 1.0m G

From approximately 40cm higher

Top 2 60 v / m 1.38m G

From approximately 30cm higher

Top 1 30 v / m 1.22m G

From approximately 20cm higher

Upper room 0 v / m 0.6m G

From approximately 10cm higher

Central room 2 v / m 1.1m G

Lower room 32 v / m 1.4m G

From approximately 10cm low

Bottom 1 110 v / m 1.82m G

From approximately 20cm low

Bottom 2 50 v / m 1.7m G

From approximately 30cm low

Bottom 3 44 v / m 1.59m G

From approximately 40cm low

Bottom 4 33 v / m 1.6m G

From approximately 50cm low

Central bedrock border of the mini-tester

Lighting

Mini-tester lighting smallest electric field strength (350v/m). A mini-tester turns on at the electric field strength of 0v/m. Positron outbreak effect to make up for the electron which became zero

Upper room Mini-tester lighting position from approximately 10cm higher of Real Cube (50cm³) . . .

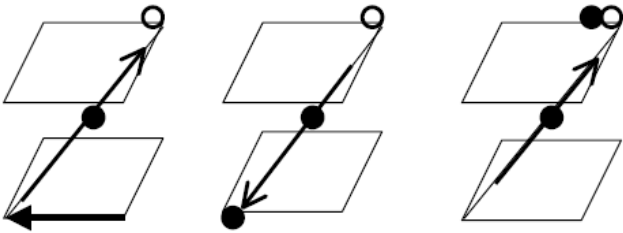
Electric field strength 0 v / m Magnetic field strength 0 . 6 m G (-37 article)



principle of Proof experiment "The birth of the new electric wave!"

The principle of B - 3 Proof experiment 1-3

The compression of another mass which is due to the deceleration for making supervelocity of light e + low speed of light. The other mass compressed is defrosted and becomes the Electric field strength more than 350v/m on the first layer membrane



e- is an electric wave of the electromagnetic induction. The electric wave that e+ does not affect electromagnetic induction = AB effect electric wave . The birth of the new electric wave that e+ coexists with e-!

Birth of the new electric wave

Repulsion element e +
Gravitation element e -

The field meter cannot measure it. It display it as necessary field strength
More than 350v/m
0mG

0v/m 0.6mG
0.6mG is normal room space magnetic field strength.
Decrease in magnetic field strength

Normal mini-tester LED lighting smallest electric field strength
Repulsion element e + = 0 v/m
Gravitation element e - = 350v/m 3.9mG

- 4 Mini-tester lighting smallest electric field strength (350v/m). A mini-tester turns on at the electric field strength of 0v/m. Positron outbreak effect to make up for the electron which became zero

cf. Study of connecting point with three-dimensions and four-dimensions by pictorial art The - 38th article

The electric field strength of TriField® Meter shows 0v/m clearly. This shows that low velocity of light e- coexists with low velocity of light e+ in the electric field out of the line.

Upper room Mini-tester lighting position from approximately 10cm higher of Real Cube (50cm³)

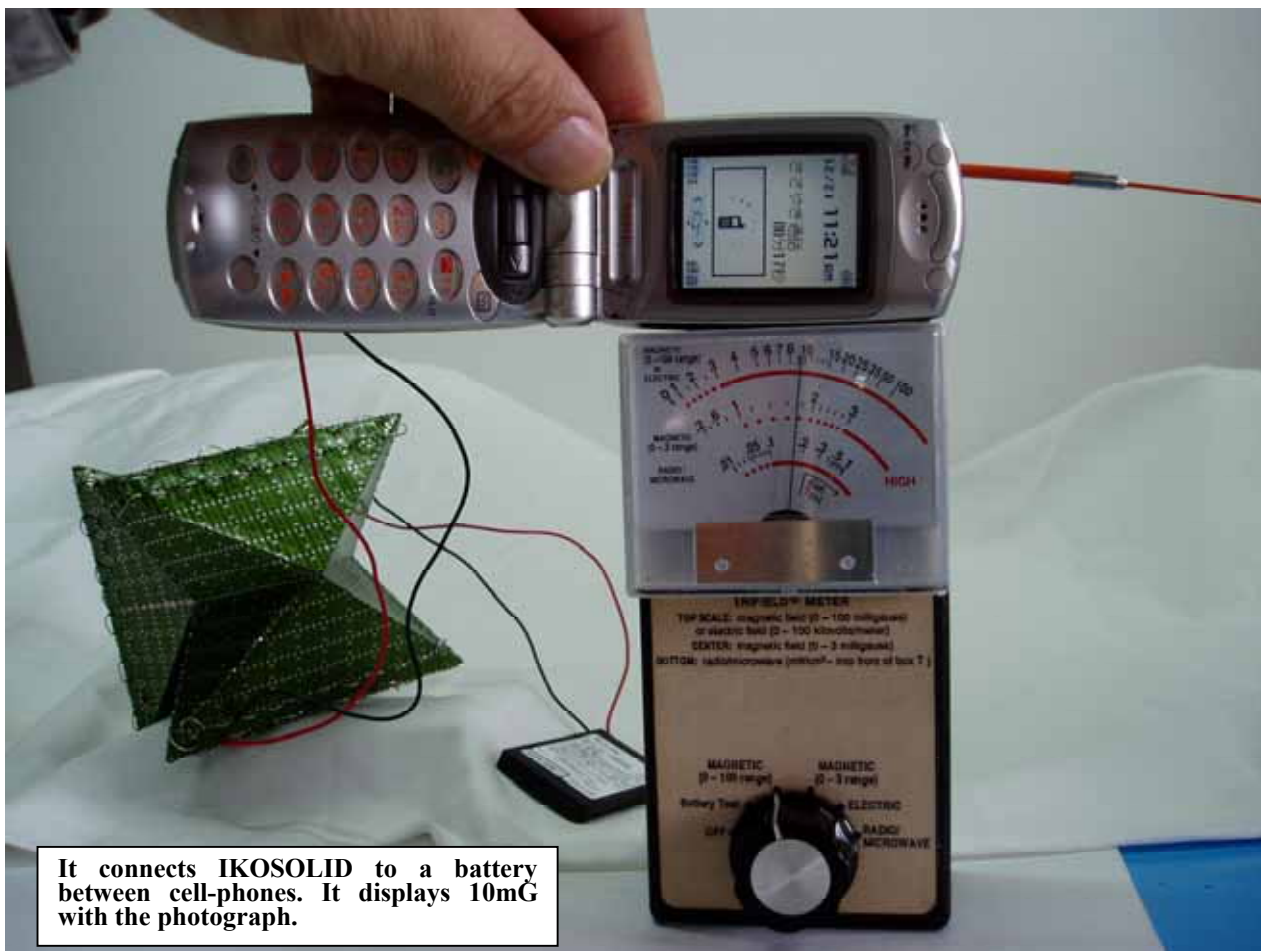
Electric field strength 0 v / m Magnetic field strength 0 . 6 m G (- 38 Paper)



B - 3 - 3 Proof experiment 3

The new magnetic field that decreases magnetic flux. Change in quality of the magnetic field

- 2 Leakage flux reduction experiment of the cellular phone ••• Document 7
Cellular phone 40mG 10 ~ 23mG Leak magnetic flux decrease effect



It connects IKOSOLID to a battery between cell-phones. It displays 10mG with the photograph.

- 3 Leak magnetic flux decrease experiment in the microwave oven Document 7 - 2
Microwave oven 90mG 70mG Leak magnetic flux decrease effect



Birth of new electricity, electric wave

It connects IKOSOLID to 100v power supply between microwave ovens. Leak magnetic flux decrease effect
90mG 70mG

In general, without the corrections such as circuits, It only connects a conductor (thing same as an electric wire) to a power supply between load, and it is impossible to decrease leak magnetic flux.

Magnetic flux decrease is a basic function of IKOSOLID (we obtained a patent).

It is the birth of the new electricity, electric wave by a new electric field and a new magnetic field.

B - 4 Characteristic of the new electricity and the electric wave

New electric field and new magnetic field

New electric field : Low velocity of light • Repulsive force element e^+ (The other mass, female, Closed string = It can go in and out with the first layer membrane and the fourth layer membrane = Repulsive force element) / Low velocity of light • Gravitation element e^- (Mass, Opened string = It is not separated from the first layer membrane = Gravitation element) Two kinds of electronic totally new electric fields that coexist. The gravitation is completely opposite to repulsive force, but is not proportional. Influence of the repulsive force is shown for lumen naturale.

New magnetic field : The totally new magnetic field where it was decreased magnetic flux by IKOSOLID. The magnetic fields increase by the electricity of e^- of the electromagnetic induction. However, by the new electricity, electric wave of e^+ decelerated to low velocity of light from super velocity of light, a magnetic field is reduced.

As for the characteristic of new electricity, electric wave, a function of repulsive force element e^+ is reflected in response to modern ready-made electronic equipment as follows.

Main repulsive force element effect

Reference: Unification of the Electromagnetic Willpower and Gravity of Four-Power of the Space : Proof by ~ for Digest

Resistance decrease 110v100w incandescent electric lamp 16 hours electricity experiment
Average of 16 hours 118.34 101.40 "Anti-frictional force effect of repulsive force element e^+ "
A resistance decrease effect and fever prevention effect.

Electricity loss decrease = reactive power decrease 16 hours experiment of the 12v2A transformer electricity loss decrease
Reactive power 8.7var 0.0var (Zero of the reactive power) "Anti-frictional force effect of repulsive force element e^+ "

Power factor improvement Three hours experiment of the inverter power factor improvement
Inverter electric bulb form fluorescent lamp PF0.64 PF1.00 "Anti-frictional force effect of repulsive force element e^+ "
16 hours experiment of the transformer power factor improvement
12v2A Transformer, Power factor improvement of the primary side PF 0.7386 PF1.0000

Power amplification 16 hours experiment of Effective power amplification of the 12v2A transformer second side
"Compression and decompression effect of the other mass by the slowdown to low velocity of light of super velocity of light e^+ that is repulsive force element"
Effective electricity of the 16 hours multiplication 41.62wh 126.55wh Amplification rate 204.06%
Electric current of the 16 hours multiplication 3.0459Ah 3.1277Ah Increase rate 2%

Transcendence of the standard norm 16 hours experiment of Electricity of the 110v100w incandescent electric lamp
"Compression and decompression effect of the other mass by the slowdown to low velocity of light of super velocity of light e^+ that is repulsive force element"
87.7w 107.4w Standard 100w is about 87w by the measurement of the integrating wattmeter. Up to 112w more than the standards of the incandescent electric lamp. Lumen naturale of repulsive force element e^+ knows that an electric bulb is broken when increase than this in 1w. The lumen naturale of repulsive force element e^+ does not disturb load by every experiment

Magnetic flux decrease Magnetic flux decrease effect experiment (Basic patent of IKOSOLID)
"Repulsive force element e^+ acts on magnetic field decrease and is not concerned with electromagnetic induction. Gravitation element e^- acts on magnetic field increase (principle of the electromagnetic induction)"
Leak magnetic flux decrease in 110v100w incandescent electric lamp experiment from wiring 33mG 12mG
Leak magnetic flux decrease in cell-phone experiment 40mG 10mG ~ 23mG
Microwave oven leak magnetic flux decrease experiment 90mG 70mG

The practical use of the ground circuit. It is produced e^+ positron by the ground side
"Two experiments that repulsive force element e^+ produced in the ground side. Change in quality of the ground by repulsive force element e^+ "
Positron generator using an IKOSOLID-binding body (Patent pending)
It wires the ground side in large-scale IKOSOLID. It normalizes blood pressure of the human body using repulsive force element e^+ flowing through the ground side, and it acts on a temperature rise. (The human body enters the central space of the combination body of large-scale IKOSOLID)
Outbreak of the eternal electricity with no power supply by IKOSOLID
LED lighting 6 hours 30 minutes. LED lighting success of 6 hours 30 minutes by the use of repulsive force element e^+ from a ground

It is produced the high frequency resonance electricity by no power supply IKOSOLID
"Compression and decompression effect of the other mass by the slowdown to low velocity of light of super velocity of light e^+ that is repulsive force element" IKOSOLID became the outbreak source of the feeble electricity that was near to human body Electric
In a shield room not to put an outside electric wave in, it applied frequency for measurements of the spectrum analyzer to no power supply IKOSOLID, and IKOSOLID did high frequency resonance and produced electricity in eternity.

Resonance frequency $f=265.375\text{MHz}$ High frequency electricity 86pW The high frequency voltage 50.814 μV

Battery longevity experiment "Compression and decompression effect of the other mass by the slowdown to low velocity of light of super velocity of light e^+ that is repulsive force element"
Experiment it connects automotive electric bulb 12v21w to automotive battery 12v3Ah, and to compare the lighting time
Usually 84 minutes lighting Net resistance revision 1 connection 91 minutes lighting
IKOSOLID connection 118 minutes lighting

B - 5 Impedance measurement of IKOSOLID

IKOSOLID is a conductor. In the measurement, at the general time, it is the same as the copper wire almost. The excitation state occurred for about 1 hour while the measurement continues. In the excitation state, an insulation value and a superconductive level value were measured at the same time. but the excitation state is not all of IKOSOLID. It reflects the feature of IKOSOLID about the repulsive force .

A measurement fact sheet (A list of correlative outlines) of ①-3

	A: IKOS-O-UNO (At normal time)	B: IKOS-O-UNO (In an excitation state)
Impedance Z (A minimum)	0.40mΩ (Z≠X 0.00mΩ) p.6 The upper part	68.902MΩ (Z≠X 68.790MΩ) Almost the equivalent with X p.10 upper
Impedance Z (A maximum)	0.96mΩ (Z≠X 0.04mΩ) p. 6 The lower part	88.339MΩ (Z≠X 87.623MΩ) Almost the equivalent with X p. 10 lower
Admittance Y (A minimum)	1.0410kS p. 6 The lower part	11.320nS p.10 The lower part
Admittance Y (A maximum)	2.4591kS p. 6 The upper part	14.513nS p.10 The upper part
Conductance G	2.2997 k S p.5 The upper part	621.71pS p.9 The upper part
Susceptance B	722.27 S p.5 The upper part	11.893nS p. 9 The upper part
Reactance X	0.00mΩ mini 0.04mΩ max p.6	68.790MΩ mini p. 10 87.623MΩ max (X≠Z 88.339MΩ)
R s Effectiveness resistance /Series	0.93mΩ p. 4 The lower part	11.224MΩ p. 10 The lower part
R p Effectiveness resistance/Parallel	0.99mΩ p. 4 The lower part	
A loss coefficient D tan=δ	0.87802 p. 4 The upper part	0.00009(min) (same time Q=999.99) p.8 lower 0.18964(max) (same time Q=5.27) p.8 upper
Q (quality factor)	1.14 p.4 The upper part	5.27 (min) (same t D=0.18964) p.8 upper 999.99 (max) (same t D=0.00009) p.8 lower
Inductance Serie L s	262.16 nH (Ls≠Lp) Overload indication p.3 upper	239.72 kH (Inductance outbreak) L s = L p (equivalent) p.7 upper
Inductance Parallel L p	30.913 μH (Ls≠Lp) Overload indication p.3 upper	239.72 kH (Inductance outbreak) L p = L s (equivalent) p.7 upper
Capacitance Series C s	10.692 F (Cs≠Cp) Overload indication p.3 lower	41.195pF (C s ≃ C p 41.193pF) Overload indication (approximately series and the parallel equivalent)p.7 lower
Capacitance Parallel C p	1.2018 F (Cs≠Cp) Overload indication p. 3 lower	41.193pF (C p ≃ C s 41.195pF) Overload indication (approximately series and the parallel equivalent) p.7 lower

C Conclusion " Formation of the integration of Gravity and Electromagnetic- Willpower "

DEFINITION

Velocity of light of super velocity of light e+

Gravity outbreak of the repulsive force element and the repulsive force

Electromagnetic willpower Outbreak of the repulsive force teleportation that gravitation element e- steps over repulsive force element e+

- Repulsive force element e+ has priority over gravitation element e- at the time of velocity of light.

Repulsive force element e+ beats gravitation element e- by the musical chairs of the binary cubit reserved seat on the first layer membrane by all means. Gravitation element e- which lost steps over repulsive force element e+. This is exclusion principle of Pauli. When gravitation element e- steps over repulsive force element e+ of the velocity of light, in gravitation element e-, it is done a repulsive force teleportation of the super velocity of light.

Low velocity of light of super velocity of light e+

Gravity outbreak of the repulsive force element and the repulsive force

Electromagnetic willpower Birth of the new electricity, electric wave that gravitation element e- coexists with repulsive force element e+

- Gravitation element e- and repulsive force element e+ have totally opposite function. However, they are not directly proportional.
- Gravitation element e- and repulsive force element e+ do not perform pair creation, pair annihilation.
e- of first layer element and e+ (= e- Mirror countenance) of second layer element does pair creation, pair annihilation
- Gravitation element e- has frictional force. Repulsive force element e+ does not have frictional force
- Gravitation element e- matches thermodynamics. Repulsive force element e+ does not match thermodynamics
- Gravitation element e- increases a magnetic field with electromagnetic induction relations. Repulsive Force element e+ decreases a magnetic field, and there are not electromagnetic induction relations.

IKOSOLID obtained a patent as a magnetic flux decrease element

- Gravitation element e- makes electricity with electromagnetic induction. Repulsive force element e+ makes electricity by other mass compression and thawing at the time of the slowdown to low velocity of light e+ of super velocity of light e+=Electricity of the AB effect.
- Gravitation element e- is an opened string, and basically it can't leave from the first layer membrane. Repulsive force element e+ is a closed string and goes in and out with the first layer membrane and the fourth layer membrane.
- Gravitation element e- is male and is a torus body and first layer element adaptation body. Repulsive force element e+ is female and is the adaptation body of double Moebius strip body = Klein bottle of first layer membrane and fourth layer membrane.
- Gravitation element e- is an artificial intelligence body needing control, and is concerned with the consciousness side of consciousness, the non-consciousness of the human. Repulsive force element e+ is the lumen naturale body that control is unnecessary, and it affects both sides of consciousness, the non-consciousness of the human.
- Gravitation element e- accelerates to sub-velocity of light. It needs an acceleration technology. Repulsive force element e+ slows from super velocity of light to velocity of light, low velocity of light. It needs a slowdown technology.
- Gravitation element e- is Graviton that drops. It needs a floating technology. Repulsive force element e+ is Graviton that floats. It needs a fall technology..

Two kinds of slowdown of super velocity of light e+

A, Velocity of light of super velocity of light e+

Gravity outbreak of the repulsive force element and the repulsive force

Electromagnetic willpower Outbreak of the repulsive force teleportation that gravitation element e- steps over repulsive force element e+

B, Low velocity of light of super velocity of light e+

Gravity outbreak of the repulsive force element and the repulsive force

Electromagnetic willpower Birth of the new electricity, electric wave that gravitation element e- coexists with repulsive force element e+

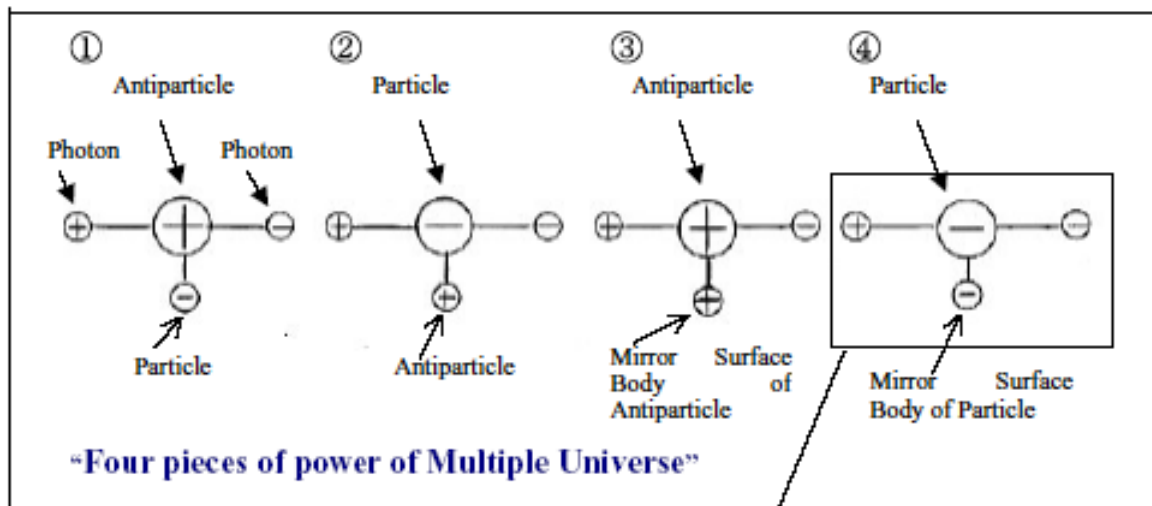
Four power of the IKOSOLID space

Reference : 2011 Koei Endo Ikuyo Endo K.I.DIAGRAM The Functional Model of Multiple Universe IKOSOLID

The IKOSOLID space is established basically from four levels of space. In four power of the space, there is four power as the IKOSOLID space.

**5-1 The Survey of Modern Physics and Really a New Topological Physics
“Four pieces of power of Multiple Universe”**

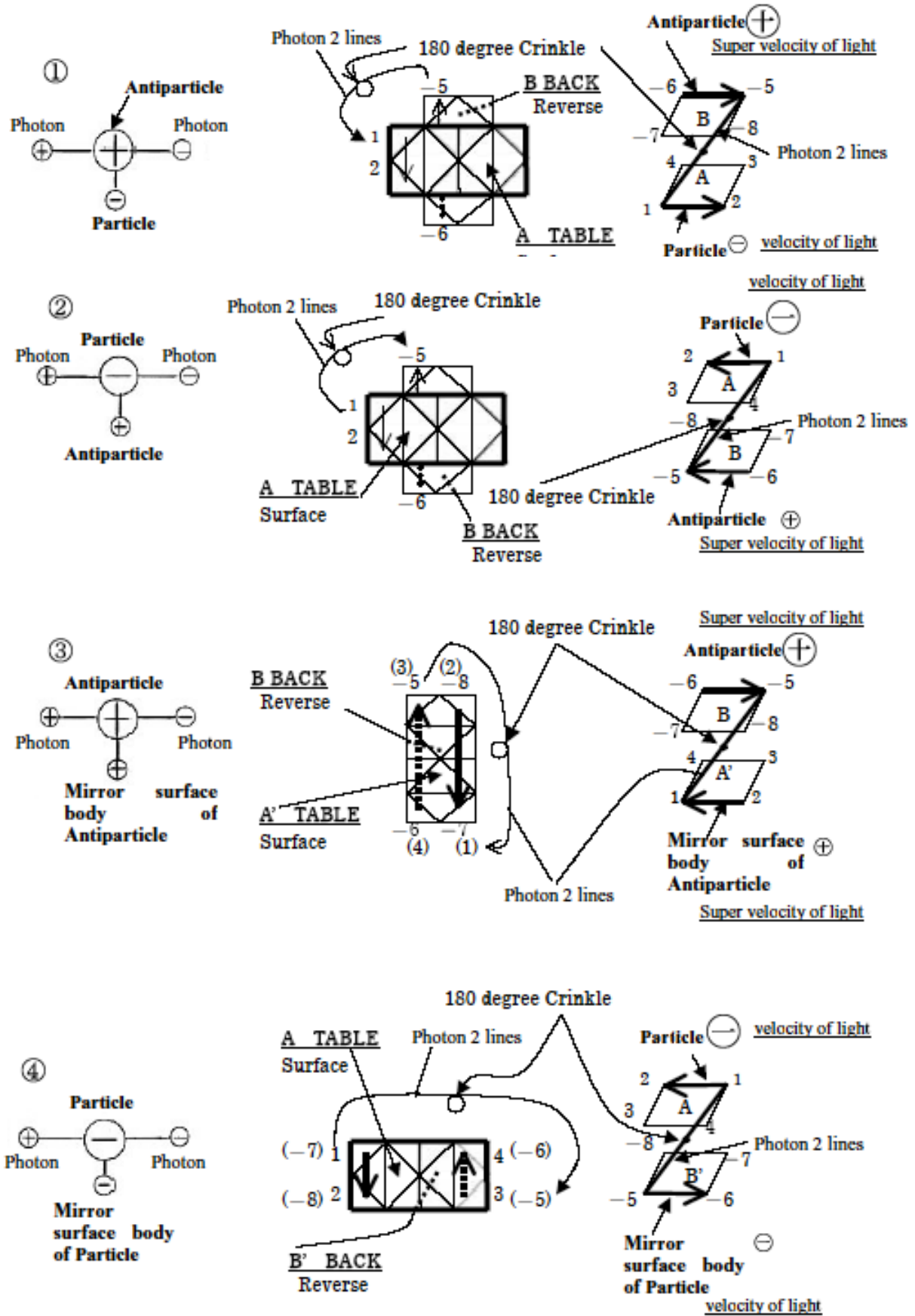
⊕⊖: This display adjusted the display of ⊕ and ⊖ to electron and the positron



**Modern Physics (Universe of 2 Layers)
4 % of universe of the metagalaxy**

**“Really a New Topological Universe of Physics by IKOSOLID”
Multiple Universe (Universe of IKOSOLID)**

5-2 The explanation of “Four pieces of power of Multiple Universe” using the IKOSOLID development



Definition

For Universe of 2 Layers (Universe of Modern Physics) has four pieces of power of Universe , Multiple Universe ,too, has four pieces of power of Universe.

Four patterns to join three dimensions and four dimensions to are four pieces of power of Multiple Universe.

IKOSOLID is really the new topological model which integrates four pieces of power of Multiple Universe and is the unique functional model.

Conclusion

**"Establishment of the unification of gravity and the electromagnetic willpower"
by IKOSOLID**

When the fourth layer membrane and the first layer membrane are connected by IKOSOLID, repulsive force element e^+ that is in the fourth layer membrane slows the super velocity of light, and it becomes a repulsive force element e^+ as velocity of light e^+ or low velocity of light e^+ in the first layer membrane. Low velocity of light e^- in the first layer membrane becomes a gravitation element e^- then.

In here, in the first layer membrane, Unification of Gravity and Electromagnetic Willpower are established. This is because Unification of Gravity and Electromagnetic Willpower is realized by Graviton that is Repulsive force element e^+ and Gravitation element e^- .

Change in quality of the first layer membrane "three dimensions world" by IKOSOLID

When the fourth layer membrane and the first layer membrane are connected by IKOSOLID, the maximum function "single laterality of Moebius strip" of the first layer membrane "three dimensions world" is broken.

Maximum function "single laterality of Moebius strip" of the first layer membrane"three dimensions world"

Single laterality of the velocity of light in super velocity of light and the velocity of light

Single laterality of the consciousness in consciousness and the non-consciousness

Single laterality of the gravitation in the repulsive force and the gravitation

These single lateralities are broken by IKOSOLID. In other words, it means that other space (96%) leads to our space (4%).

D, References

- 2011 Koei Endo, Ikuyo Endo K.I.DIAGRAM The Functional Model of Multiple Universe IKOSOLID
K.I. Research Institute web site <http://koeiikuyo.web.fc2.com/>
- 2010 Koei Endo, Ikuyo Endo Unification of the Electromagnetic Willpower and Gravity of Four-Power of the
Space :Proof by ~ for Digest
- 2003 Koei Endo, Ikuyo Endo Device to reduce electric power loss
- 2012 Dr. Alexander Egoyan THE CONCEPTUAL BASIS FOR MULTIDIMENSIONAL PHYSICS
CIMDS web site <http://www.cimds.biz.nf/>

Pauli exclusion principle Wikipedia

AB effect = Aharonov-Bohm effect Wikipedia

Repulsion Wikipedia